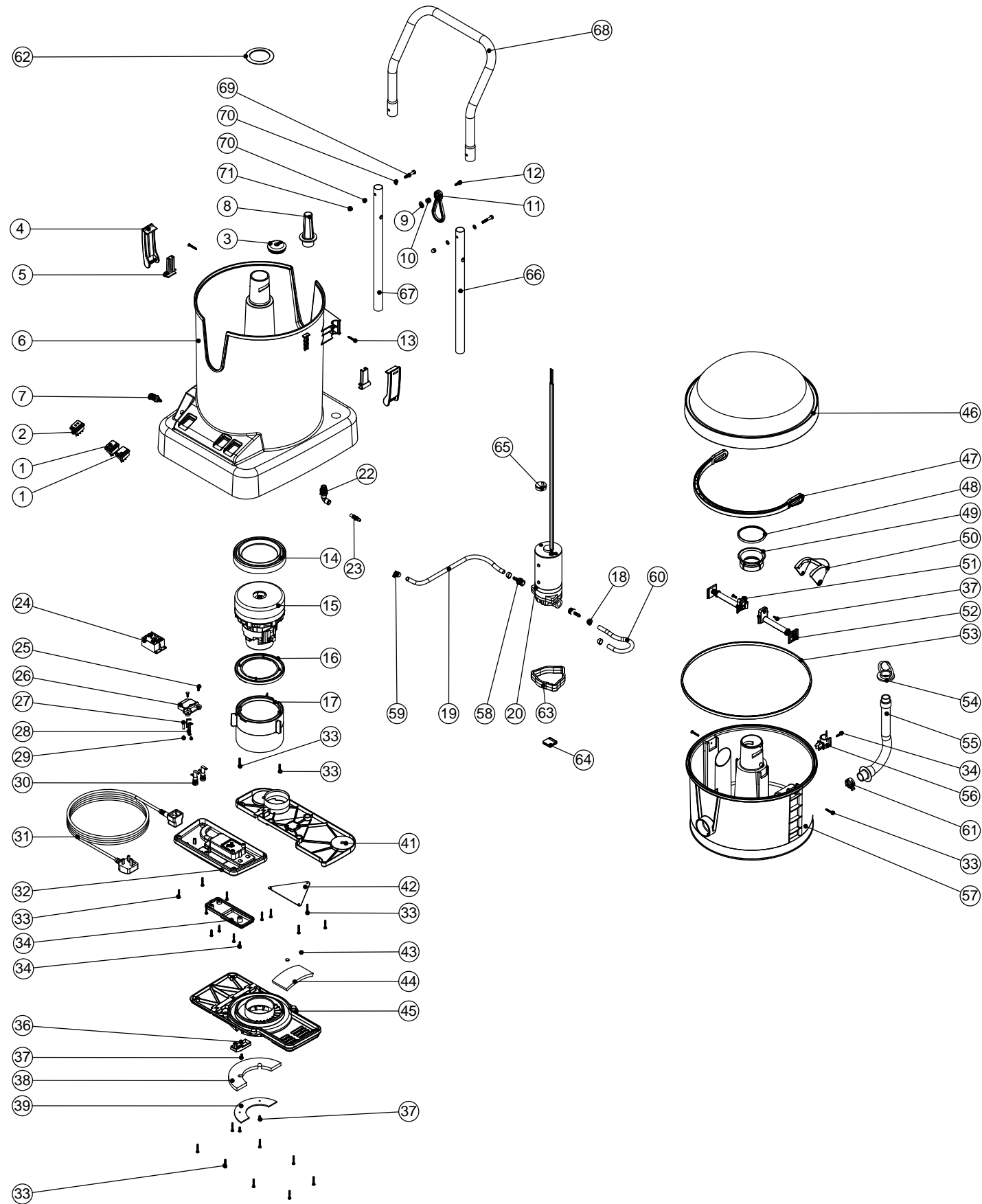


Numatic International Spare Parts

Model No: CLEANTEC HILO 15 GENERAL ASSEMBLY

234825
DRAWING: DRW-6608 ISS:A01
11/07/2011

NB: FOR WIRING SEE DRAWING: DRW-9729



Numatic International Spare Parts

Model No: CLEANTEC HILO 15 GENERAL ASSEMBLY

POS.	ITEM NO.	DESCRIPTION	COMMENTS
1	270146	GREEN ILLUMINATED SWITCH + MEMBRANE	
2	229465	DOUBLE POLE CHANGE OVER RED ROCKER SWITCH	
3	237214	CABLE GRIP (CLEANTEC)	
4	237226	TOGGLE BODY (CLEANTEC)	
5	237234	TOGGLE SNAP (CLEANTEC)	
6	300285	CLEANTEC DRUM (PUNCHED & PRINTED)	
7	216637	QUICK RELEASE BULK HEAD FITTING WITH TAIL	
8	207122	BARREL FILTER	
9	219010	M8 FORM A WASHER	
10	226006	SPACER (BLACK)	
11	226008	STRESS RELIEF	
12	219054	M5 X 20MM LONG POZI PAN SCREW	
13	219826	NO8 X 1 1/4 INCH LONG POZI DRIVE COUNTERSUNK HEAD SCREW	
14	202065	BOTTOM MOTOR GASKET	
15	205410	220V 2 STAGE D.I BYPASS ACUSTEK MOTOR (BL21102) (MARKED 230V)	
	205441	120V 2 STAGE D.I BYPASS ACUSTEK MOTOR (BL21101T)TCO(REF119845-00)	
16	227925	TOP MOTOR GASKET	
17	237190	AIR SEPERATOR (CLEANTEC)	
18	291024	12.5MM SINGLE EAR HOSE CLIP	
19	303958	OUTLET TUBE 410MM BRAIDED PVC HOSE	
20	216590	230V PUMP	
21	216690	120V PUMP	
22	216314	RIGHT ANGLED CONNECTOR	
23	291025	STRAIGHT CONNECTOR	
24	208443	PUMP SPEED CONTROL PCB UNIT (CLEANTEC)	
25	219601	No8 X 3/8 INCH LONG POZI PAN PLASTITE SCREW	
26	227691	TERMINAL BLOCK	
27	206562	CONTACT PIN	
28	206563	EARTH CONTACT PIN	
29	219090	M4 X 8MM LONG POZI PAN SEMS SCREW	
30	221420	FUSE HOLDER	
31	236010	10.0M X 1.00MM X 3 CORE NUCABLE (UK PLUG)	
	236124	10.0MT X 1MM X 3 CORE YELLOW CABLE (SOCKET + PLUG) EURO	
	236018	10.0MT X 1MM X 3 CORE CABLE (SOCKET + PLUG) SWISS	
	236022	10.0MT X 1MM X 3 CORE CABLE (SOCKET + PLUG) SOUTH AFRICA	
	236030	10.0MT X 1.0MM X 3 CORE CABLE (SOCKET + PLUG) AUSTRALIAN	
	236043	10.0M X 18AWG X 3 CORE CABLE (YELLOW) SJTW + 5-15P PLUG CSA	
32	237215	HL15 BACK PLATE SWITCH COVER (CLEANTEC)	
33	219104	No8 X 1 INCH LONG POZI PAN PLASTITE SCREW	
34	237219	HL15 BACK PLATE PLUG COVER (CLEANTEC)	
34	219041	No8 X 3/4 INCH LONG POZI PAN SCREW	
36	237223	HL15 BACK PLATE MOTOR WIRE COVER (CLEANTEC)	
37	219101	No8 X 1/2 INCH LONG POZI PAN PLASTITE SCREW	
38	207119	BYPASS MOTOR FILTER (CLEANTEC)	
39	392122	INTAKE FILTER PLATE (CLEANTEC)	
40	204107	CLEANTEC (TENTE) 3 INCH CASTOR (40MM STEM)	
41	237225	HL15 BACK PLATE PUMP COVER (CLEANTEC)	
42	392123	PUMP PLATE (CLEANTEC)	
43	219832	3MM DIAMETER STARLOCK	
44	206260	AIR DIFFUSER PAD	
45	237224	HL15 BACK PLATE MOTOR COVER (CLEANTEC)	
46	237193	CLEANTEC DOME	
47	237208	15L TOP BUCKET HANDLE (CLEANTEC)	
48	208464	SERVICE FILTER CAP (CLEANTEC)	
49	237213	FILTER CONICAL THREADED (CLEANTEC)	
50	237212	LOCKING CAM (CLEANTEC)	
51	237210	SUPPORT STRUT LEFT (CLEANTEC)	
52	237209	SUPPORT STRUT RIGHT (CLEANTEC)	
53	202125	SEAL 15L BUCKET (CLEANTEC)	
54	206058	HOSE CLOSURE	
55	208463	1" DUMP HOSE 310MM	
56	237155	BUCKET CLIP (TROLLEY VAC)	
57	237192	HL15 15L TOP BUCKET (CLEANTEC)	
58	291018	3/8 BSP x 6mm HOSETAIL FITTING	
59	291030	JUBILEE CLIP - 9.5-12	
60	303957	INLET TUBE 260MM BRAIDED PVC HOSE	
61	291026	24MM CONSTANT TENSION CLIP	
62	237273	CLEANTEC HI LO DRUM SEAL	
63	237269	HI LO PUMP GASKET	
64	237270	HI LO TOP RUBBER PAD	
65	237271	HI LO BOTTOM RUBBER PAD	
66	402039	LEFT HAND HANDLE UPRIGHT PAINTED BLACK	
67	402040	RIGHT HAND HANDLE UPRIGHT (INSERTED) PAINTED BLACK	
68	402041	HANDLE TOP HANDLE FRAME PAINTED BLACK	
69	219064	M6 X 35MM LONG HEX BOLT	
70	219007	M6 FORM B WASHER	
71	219080	M6 DOMENUT	