



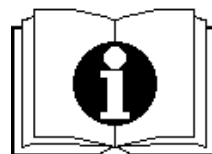
— SCHEMATIC DRAWINGS —

装配示意图

手推式洗地机 T55 / 50 BT+

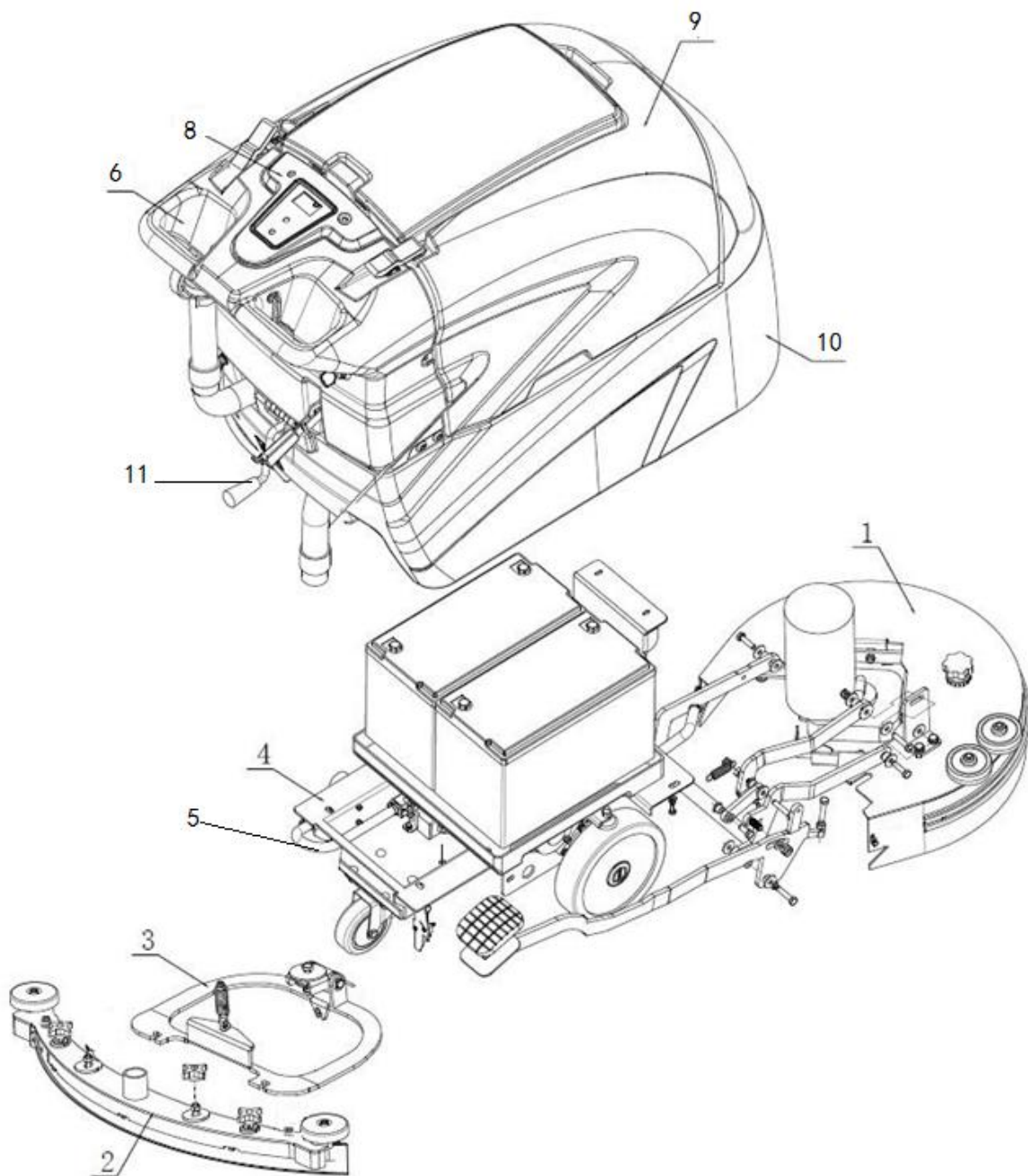
Scrubber Dryer T55 / 50 BT+

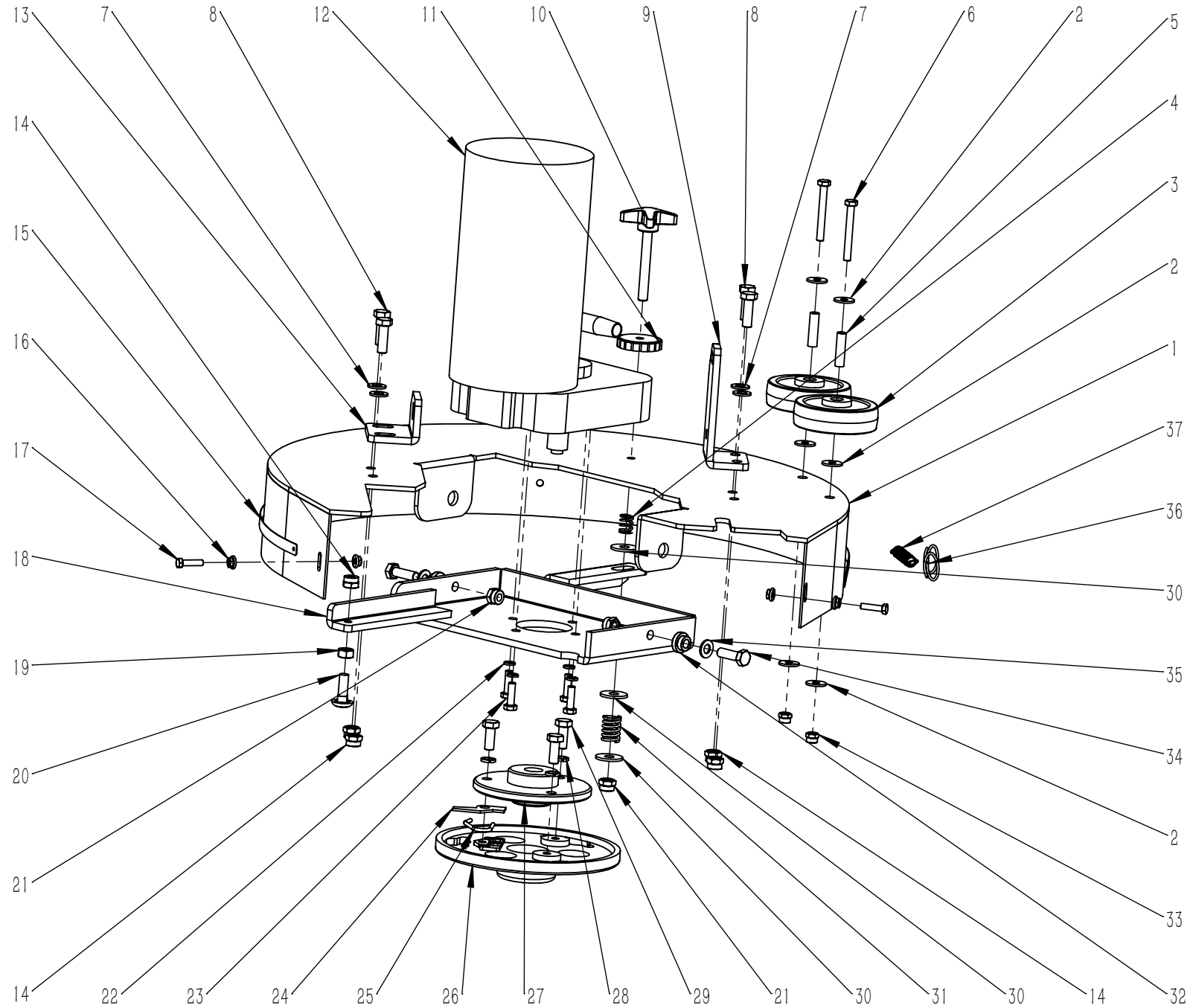
Issued in 2020 APRIL  
Version: V02



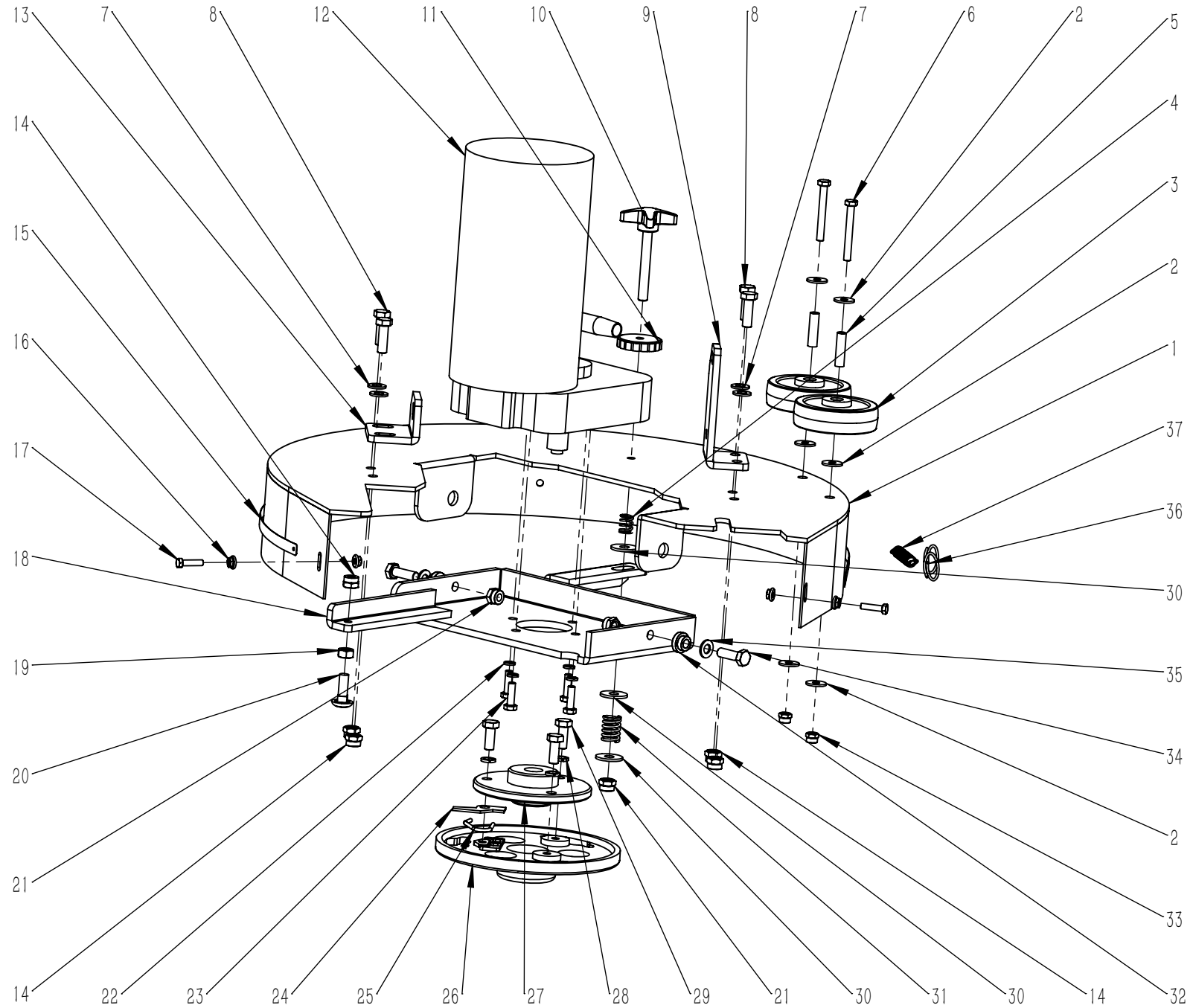
## 目 录

1. 机头组件	1—4
2. 扒头组件	5—6
3. 扒头支架组件	7—8
4. 底座架组件	9—14
5. 水路组件	15—16
6. 手柄盒组件	17—18
7. 电路板支架组件	19—22
8. 控制面板组件	23—24
9. 污水箱组件	25—28
10. 清水箱组件	29—30
11. 整机组件	31—32
12. 包装组件	33—36

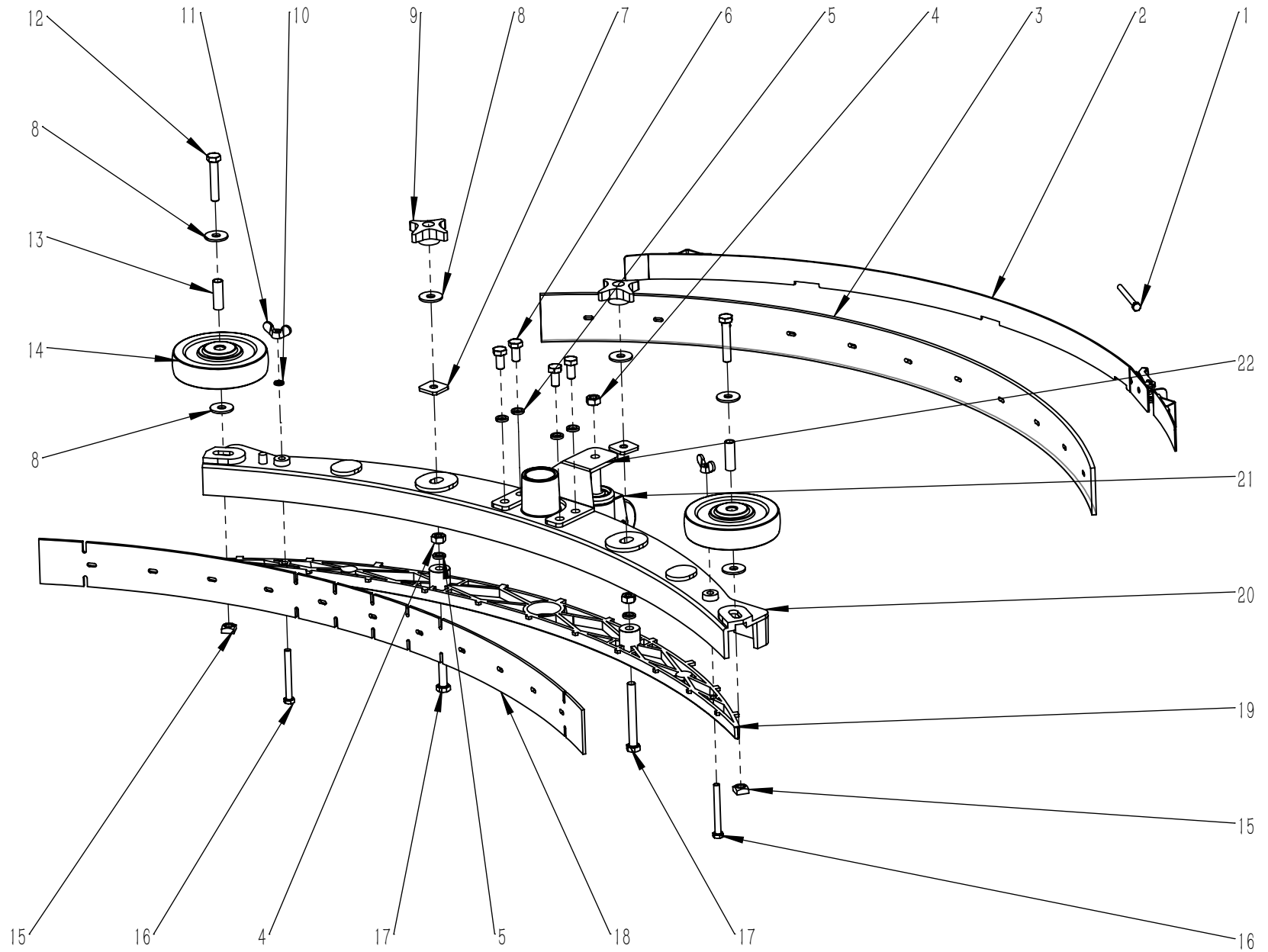




项目号 ITEM	零件号 P/N	数量 QTY	名称	DESCRIPTION
1	A040016	1	机头外罩 Φ518	COVER Φ518
2	N030022	6	平垫 6x18x1.6 不锈钢	WASHER 6x18x1.6 A2
3	N110001	2	防撞轮 Φ75	WHEEL Φ75
4	B060001	1	压簧 1.5x12x15	SPRING 1.5x12x15
5	B020010	2	防撞轮铜套 6x8x30	BUSHING 6x8x30
6	N010087	2	外六角-M6x50-不锈钢-全牙	SCREW M6x50 A2
7	N030006	4	平垫 8x16x1.6 镀锌	WASHER 8x16x1.6 ZINC
8	N010007	4	外六角 M8x25 镀锌	SCREW M8x25 ZINC
9	A040041	1	机头支座 38x51x108	SUPPORT 38x51x108
10	N100003	1	调节手柄 M8x60	ADJUSTER M8x60
11	N020009	1	花型螺母 M8	NUT M8
12	E040003	1	刷盘电机 24V 500W 140RPM	BRUSH MOTOR 24V 500W 140RPM
13	A040040	1	机头支座 45x55x40	SUPPORT 45x55x40
14	N020001	5	自锁螺母 M8 镀锌	LOCK NUT M8 ZINC
15	A040019	1	防溅条紧固钢条 10x1050	BLADE 10x1050
16	N020004	4	法兰面螺母 M5 镀锌	NUT M5 ZINC
17	N010062	2	外六角 M5x20 镀锌	SCREW M5x20 ZINC
18	A040012	1	电机座 240X353	MOTOR SUPPORT 240X353
19	N020018	1	螺母 M8 镀锌	NUT M8 ZINC
20	N010014	1	圆头方径螺栓 M8x25 镀锌	SCREW M8x25 ZINC
21	N020024	3	自锁螺母-M8-不锈钢	LOCK NUT M8 A2
22	N040001	4	弹垫-M6-镀锌	LOCK WASHER M6 ZINC
23	N010006	4	外六角-M6x20-镀锌	SCREW M6x20 ZINC
24	A040004	1	刷盘挡片 45x25	PLAQUE 45x25
25	B060013	1	刷盘锁紧弹簧 Φ3	LOCKING SPRING Φ3
26	D010005	1	刷盘锁紧器 ZL-左	BRUSH PLATE-LEFT
27	B060039	1	螺纹轴电机法兰（左）M18x30	LEFT FLANGE M18x30
28	N040013	3	弹垫 M8 镀锌	LOCK WASHER M8 ZINC
29	N010034	3	外六角 M8x20 镀锌	SCREW M8x20 ZINC
30	N030028	3	平垫-8x24x2-不锈钢	WASHER 8x24x2 A2

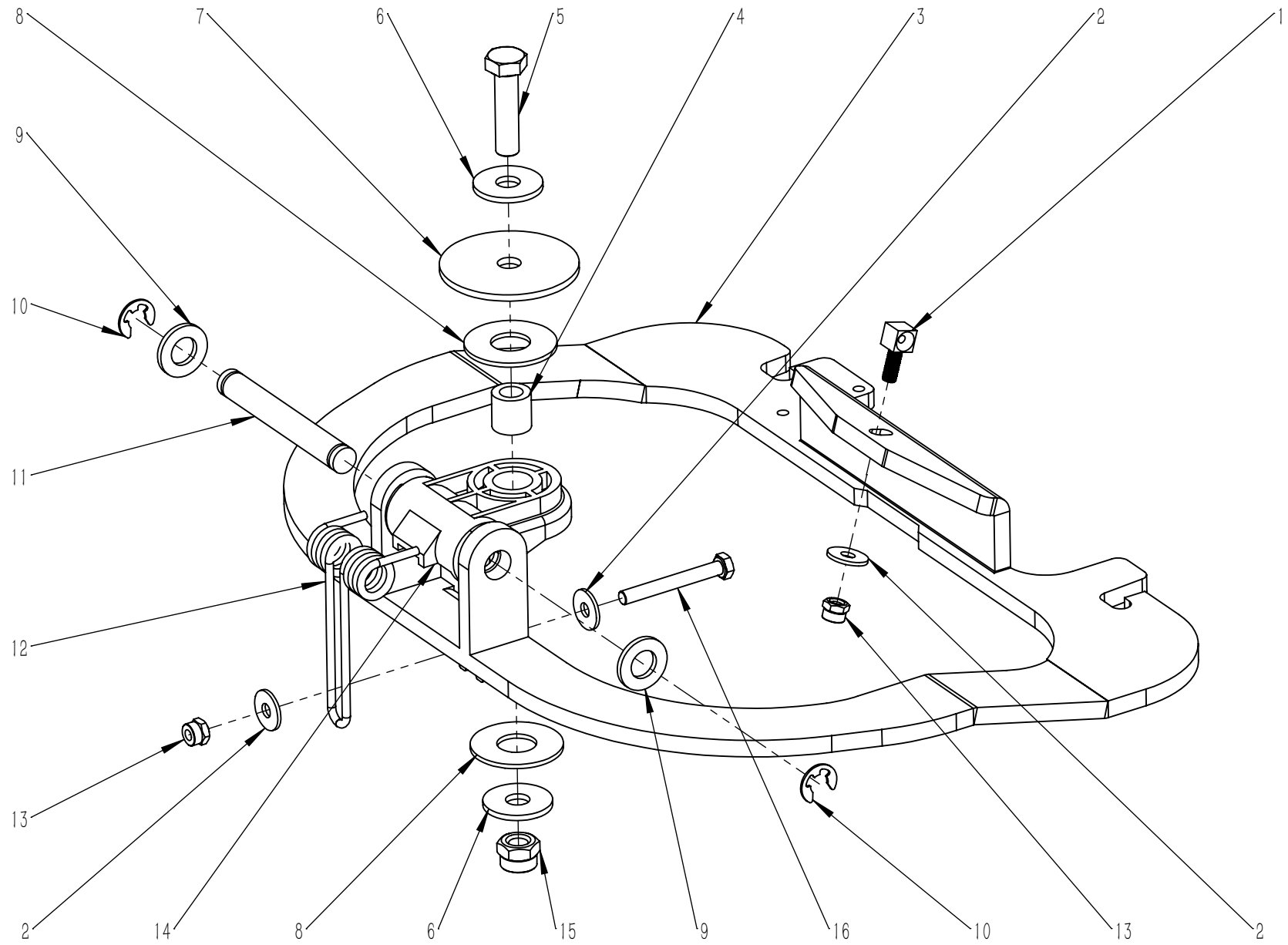


项目号 ITEM	零件号 P/N	数量 QTY	名称	DESCRIPTION
31	B070019	1	压簧 2x16.6x23	SPRING 2x16.6x23
32	B020009	2	轴套 8x18x(8-3.5)	SPACER 8x18x(8-3.5)
33	N020006	2	自锁螺母-M6-不锈钢	LOCK NUT M6 A2
34	N010094	2	外六角-M8x25-不锈钢	SCREW M8x25 A2
35	N030010	2	平垫-8x16x1.6-不锈钢	WASHER 8x16x1.6 A2
36	B070010	1	异型套圈 2x26	RING 2x26
37	B060012	1	钢条拉簧 1.1x10x55	SPRING 1.1x10x55

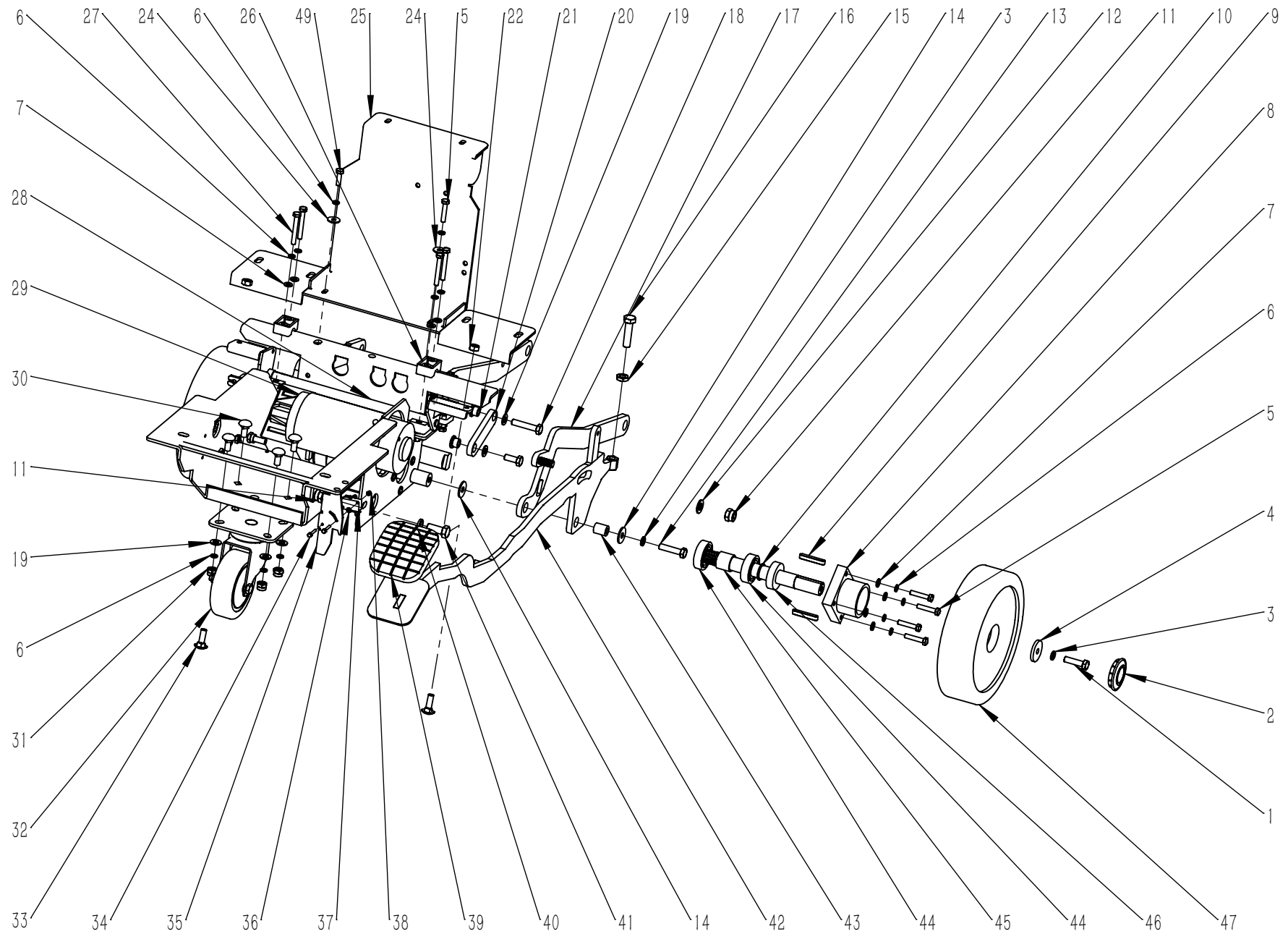


项目号 ITEM	零件号 P/N	数量 QTY	名称	DESCRIPTION
1	N010146	1	外六角-M5x55-不锈钢	SCREW M5x55 A2
2	A030035	1	扒头后固定钢板 820	PLATES 820
3	C030015	1	后刮条-橡皮-4.5x53x835	REAR SQUEEGE BLADE RUBBER 4.5x53x835
4	N020010	3	螺母-M8-不锈钢	NUT M8 A2
5	N040017	6	弹垫-M8-不锈钢	LOCK WASHER M8
6	N010143	4	外六角-M8x16-不锈钢	SCREW M8x16 A2
7	B060118	2	圆薄螺母-M8x30x3-镀锌	NUT M8x30x3 ZINC
8	N030028	6	平垫-8x24x2-不锈钢	WASHER 8x24x2 A2
9	N100005	2	四星螺帽 M8x22	NUT M8x22
10	N040011	2	弹垫-M6-不锈钢	LOCK WASHER M6 A2
11	N020057	2	蝶形螺母-M6-不锈钢	WING NUT M6 A2
12	N010050	2	外六角-M8x45-不锈钢	SCREW M8x45 A2
13	B020027	2	防撞轮铜套 8x10x31	BUSHING 8x10x31
14	N110019	2	防撞轮 D100x29.5	WHEEL Φ100x29.5
15	N020011	2	方形螺母-M8-13x13x6.5-不锈钢	NUT M8 13x13x6.5 A2
16	N010168	2	外六角-M6x55-不锈钢	SCREW M6x55 A2
17	N010127	2	外六角-M8x70-不锈钢-全牙	SCREW M8x70 A2
18	C030014	1	前刮条-橡皮-3x50x785	FRONT SQUEEGE BLADE RUBBER 3x50x785
19	B050024	1	半月板 733	PLATE 733
20	D010012	1	扒头主体-760-单轮	SQUEEGEE BODY 724
21	N110010	1	万向轮 D50	UNIVERSAL WHEEL Φ50
22	A030051	1	万向轮支架(中)	SUPPORT (MIDDLE)

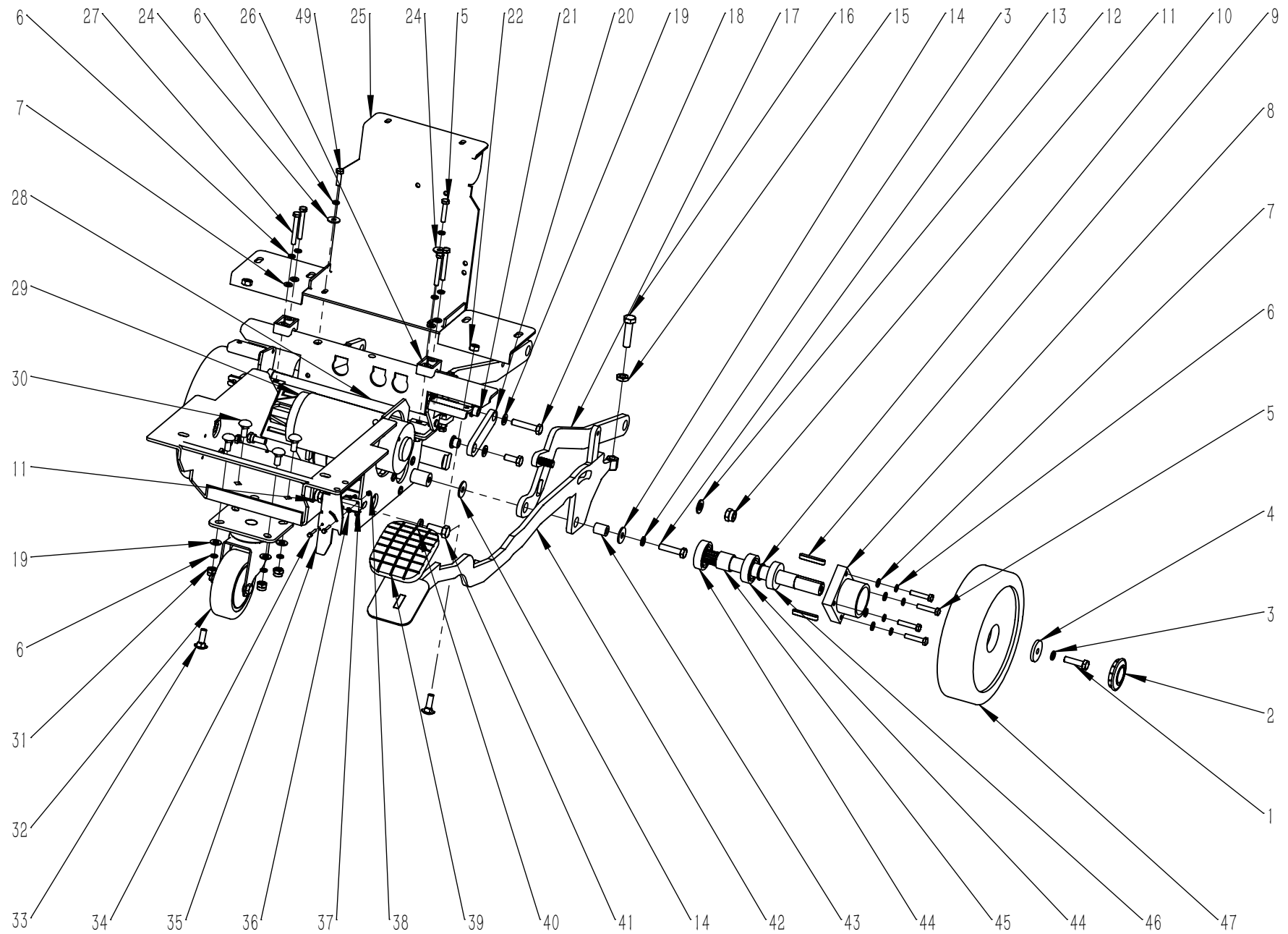




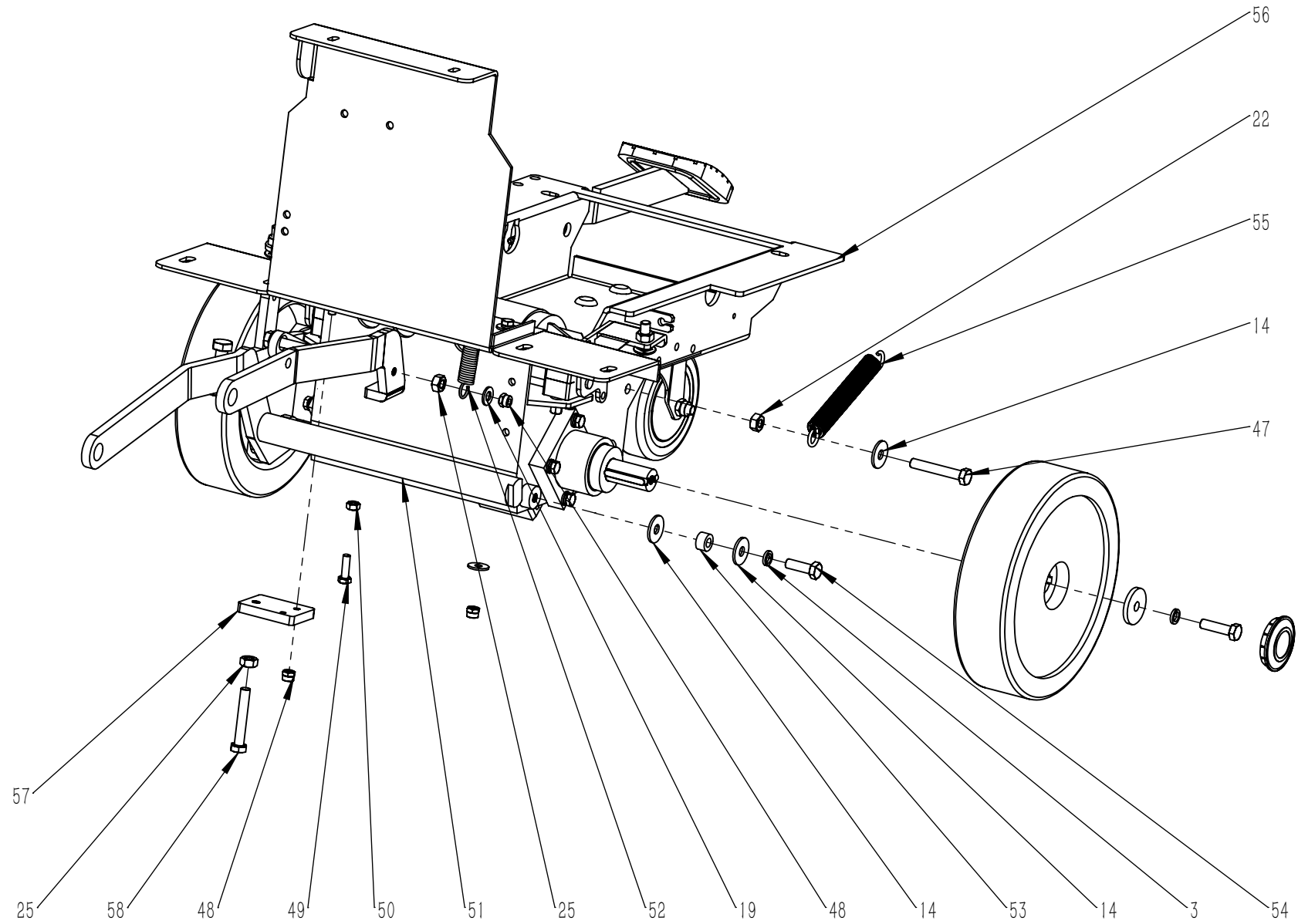
项目号 ITEM	零件号 P/N	数量 QTY	名称	DESCRIPTION
1	B060035	1	方头带孔螺栓-M6x25-镀锌	COUPLING M6x25 ZINC
2	N030008	3	平垫 6x18x1.6 镀锌	WASHER 6x18x1.6 ZINC
3	A050051	1	扒头支架 263	SUPPORT 263
4	B020003	1	铜套 10.2x17x16.5	BUSHING 10.2x17x16.5
5	N010026	1	外六角 M10x40 镀锌	SCREW M10x40 ZINC
6	N030041	2	平垫-10x30x2.5-镀锌	WASHER 10x30x2.5 ZINC
7	B050022	1	四氟垫片 10.2x60x3	WASHER 10.2x60x3
8	B050005	2	四氟垫片 17.2x40x2	WASHER 17.2x40x2
9	N030011	2	平垫 12x24x2.5 镀锌	WASHER 12x24x2.5 ZINC
10	N080005	2	卡簧 $\varnothing 9$	CIRCLIP $\varnothing 9$
11	B060099	1	转动轴 $\Phi 12x86$	AXIS OF ROTATION $\Phi 12x86$
12	B070016	1	压力弹簧 3.5x20x40.5	PRESSURE SPRING 3.5x20x40.5
13	N020012	2	自锁螺母 M6 镀锌	LOCK NUT M6 ZINC
14	D010007	1	转换座 58	COUPLING 58
15	N020002	1	自锁螺母 M10 镀锌	LOCK NUT M10 ZINC
16	N010021	1	外六角-M6x50-镀锌-全牙	SCREW M6x50 ZINC



项目号 ITEM	零件号 P/N	数量 QTY	名称	DESCRIPTION
1	N010002	2	外六角-M8x30-镀锌	SCREW M8x30 ZINC
2	C020036	2	脚轮盖 D50	COVER Φ 50
3	N040013	4	弹垫-M8-镀锌	LOCK WASHER M8 ZINC
4	B060069	2	平垫-8.5x30x4-镀锌	WASHER 8.5x30x4 ZINC
5	N010033	9	外六角-M6x30-镀锌	SCREW M6x30 ZINC
6	N040001	18	弹垫-M6-镀锌	LOCK WASHER M6 ZINC
7	N030007	12	平垫-6x12x1.6-镀锌	WASHER 6x12x1.6 ZINC
8	D010010	2	轴承座 D70	BEARING SUPPORT Φ 70
9	N060001	4	平键 6x40	FLAT KEY 6x40
10	B060026	2	驱动轴 D20x185	AXLE SHAFT Φ 20x185
11	N020002	2	自锁螺母-M10-镀锌	LOCK NUT M10 ZINC
12	N030004	1	平垫-10x20x2-镀锌	WASHER 10x20x2 ZINC
13	N010008	1	外六角-M8x35-镀锌	SCREW M8x35 ZINC
14	N030027	5	平垫-8x24x2-镀锌	WASHER 8x24x2 ZINC
15	N020053	1	六角薄螺母-M10-镀锌	NUT M10 ZINC
16	N010026	1	外六角-M10x40-镀锌	SCREW M10x40 ZINC
17	A040015	1	机头上支架 259	FRAME UP 259
18	N010043	1	外六角-M8x40-镀锌	SCREW M8x40 ZINC
19	N030006	7	平垫-8x16x1.6-镀锌	WASHER 8x16x1.6 ZINC
20	A040010	1	连接板 24x70	PLAQUE 24x70
21	B020005	2	铜套 8x(18-13)x10.5	BUSHING 8x(18-13)x10.5
22	N020018	5	螺母-M8-镀锌	NUT M8 ZINC
24	N030008	3	平垫-6x18x1.6-镀锌	WASHER 6x18x1.6 ZINC
25	A030003	1	电瓶挡板 448	SPLASH GUARD 448
26	C020002	4	哈氟块 23	HOLDFAST 23
27	N010114	4	外六角-M6x45-镀锌	SCREW M6x45 ZINC
28	A030001	1	刹车连杆 265	ROCKER ARM 265
29	E080001	1	驱动电机-24V-120W-105RPM	DRIVE MOTOR 24V 120W 105RPM
30	N010091	4	圆头方颈螺栓-M8x20-镀锌	SCREW M8x20 ZINC
31	N020001	5	自锁螺母-M8-镀锌	LOCK NUT M8 ZINC

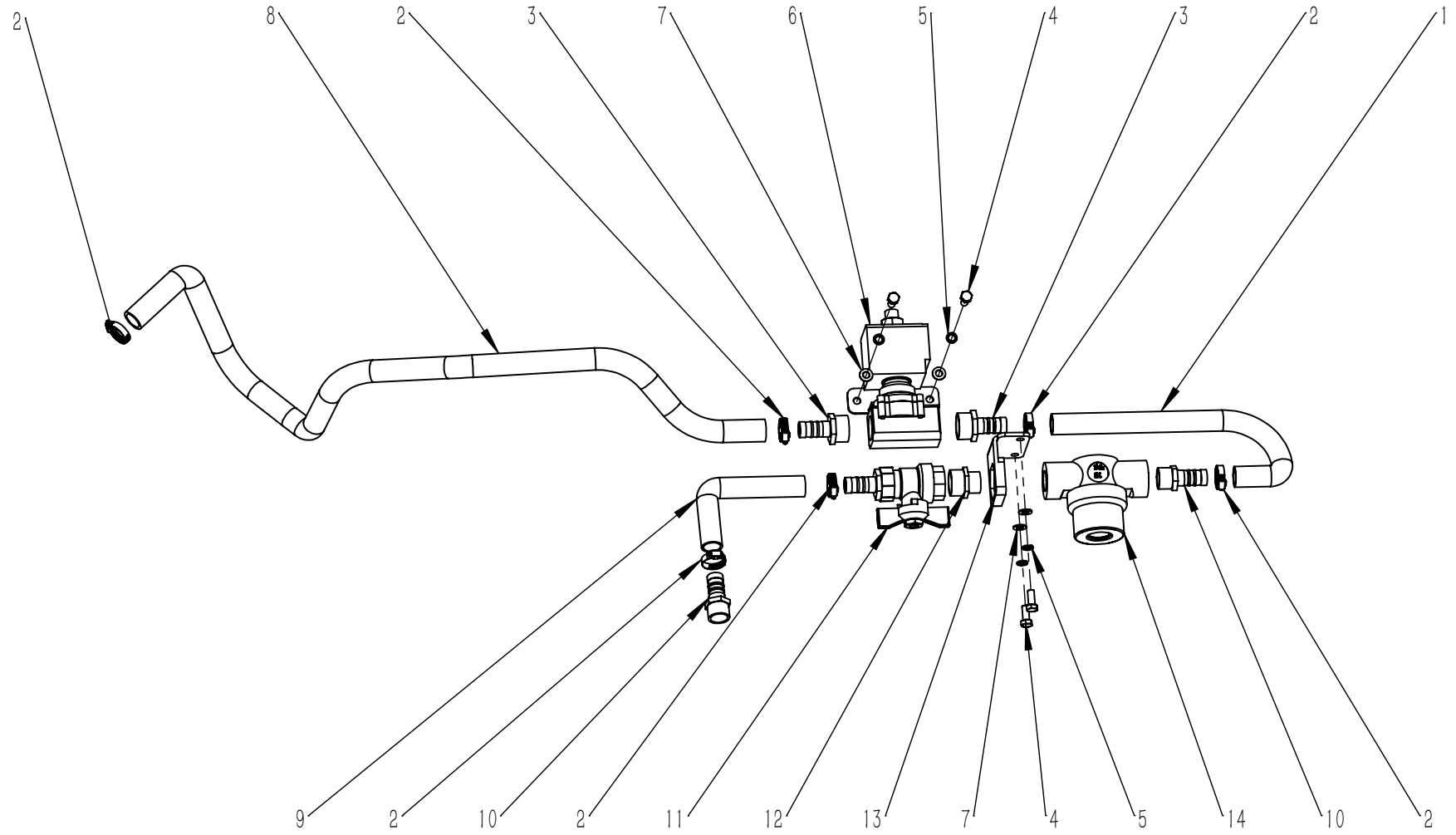


项目号 ITEM	零件号 P/N	数量 QTY	名称	DESCRIPTION
32	N110004	1	万向轮 D100	UNIVERSAL WHEEL Φ 100
33	N010014	2	圆头方径螺栓-M8x25-镀锌	SCREW M8x25 ZINC
34	N010027	2	外六角-M3x20-不锈钢	SCREW M3x20 A2
35	A030005	1	脚踏限位挡板 109x33	GUARD 109x33
36	N030021	4	平垫-3x7x0.5-尼龙	WASHER 3x7x0.5 NYLON
37	E020030	1	防水微动开关-250V-16A-常闭	MICROSWITCH 250V 16A NORMALLY SWITCH OFF
38	N020045	2	自锁螺母-M3-不锈钢	LOCK NUT M3 A2
39	C030006	1	脚踏垫 98x80	RUBBER PAD 98x80
40	N040003	1	弹垫-M10-镀锌	LOCK WASHER M10 ZINC
41	N010060	1	外六角-M10x25-镀锌	SCREW M10x25 ZINC
42	A050007	1	脚踏板 740	PEDAL 740
43	B020004	1	铜套 8.3x15x18.5	BUSHING 8.3x15x18.5
44	N070001	4	轴承 6004	BEARING 6004
45	B060027	2	轴承垫圈 20x25x21	WASHER 20x25x21
46	B060028	2	垫圈 20x40x11	WASHER 20X40X11
47	C020004	2	驱动轮 D200x50	DRIVING WHEEL Φ 200x50

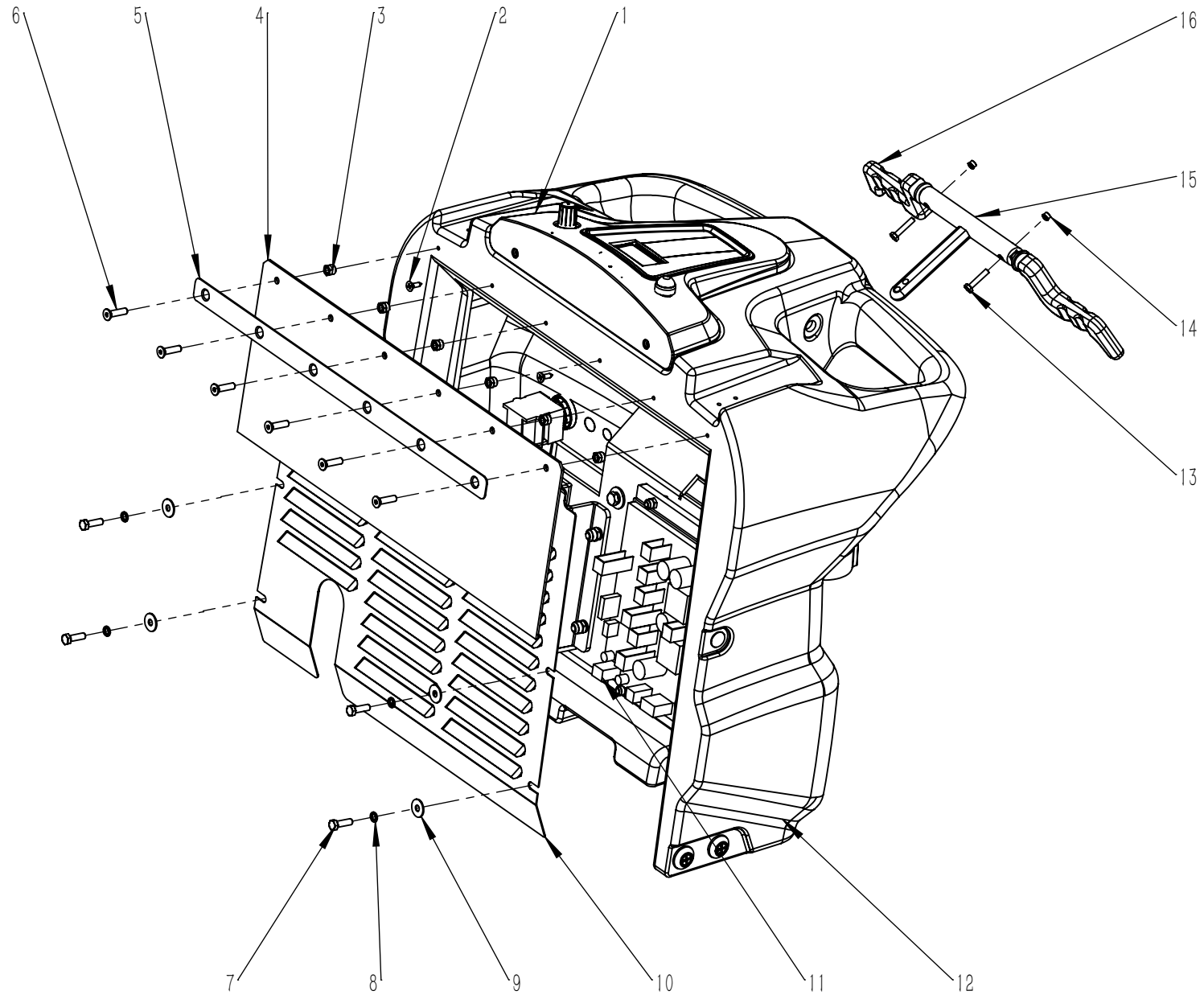


项目号 ITEM	零件号 P/N	数量 QTY	名称	DESCRIPTION
48	N020012	3	自锁螺母-M6-镀锌	LOCK NUT M6 ZINC
49	N010006	2	外六角-M6x20-镀锌	SCREW M6x20 ZINC
50	N020022	1	螺母-M6-镀锌	NUT M6 ZINC
51	A040014	1	机头下支架-272-T55	FRAME DOWN 272 T55
52	B060030	1	机头拉簧 2x15x60	SPRING 2x15x60
53	B020001	1	铜套 8x15x8.5	BUSHING 8x15x8.5
54	N010007	1	外六角-M8x25-镀锌	SCREW M8x25 ZINC
55	B070003	1	拉簧 2.8x20x93	SPRING 2.8x20x93
56	A030002	1	底座架-450x222-T55-70BT	FRAME 450x222 T55/70BT
57	A030004	1	连接板 55x40	PLAQUE 55x40
58	N010010	2	外六角-M8x50-镀锌	SCREW M8x50 ZINC

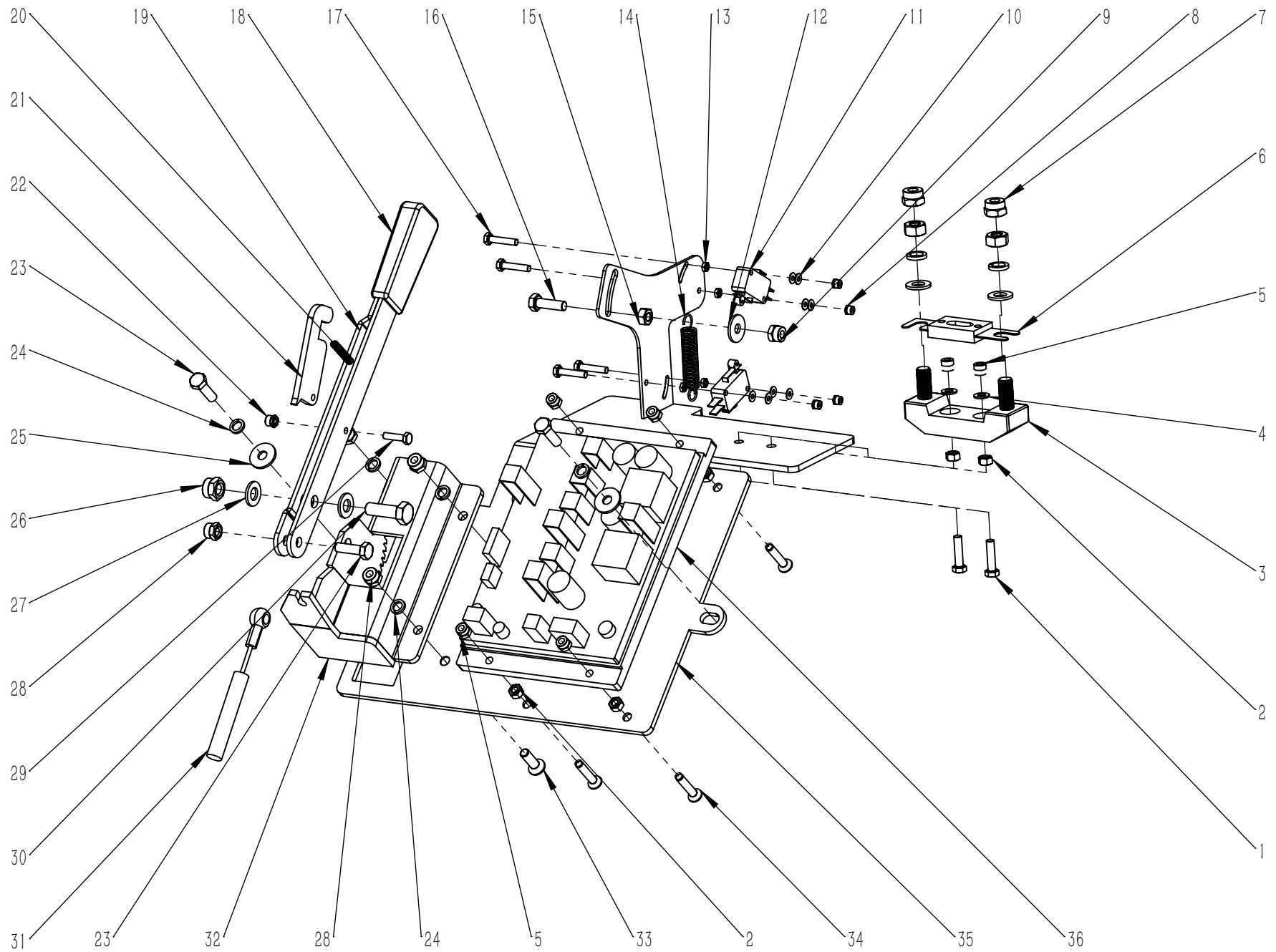




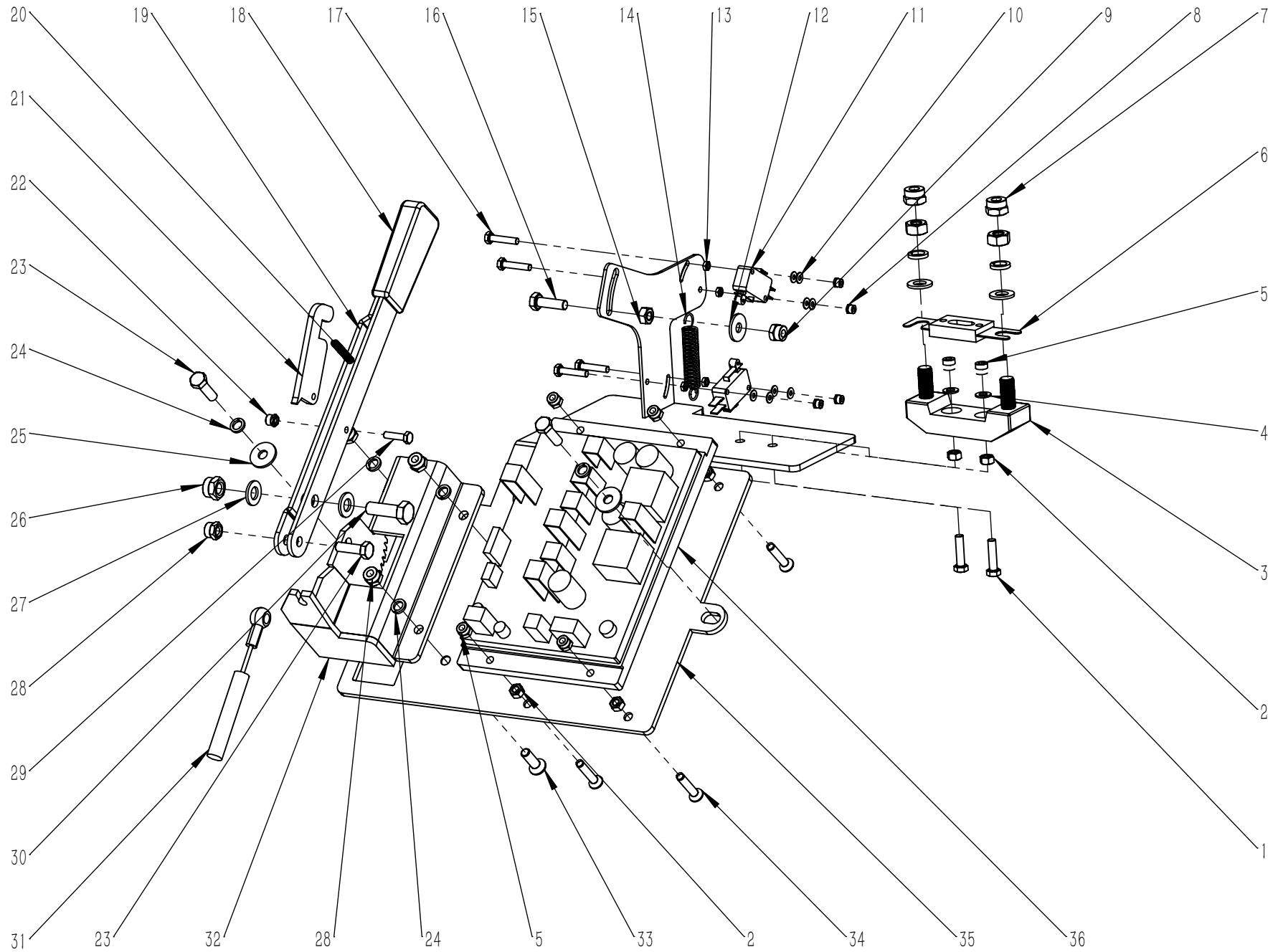
项目号 ITEM	零件号 P/N	数量 QTY	名称	DESCRIPTION
1	F050013	1	内嵌钢丝水管 D=18 D=13 L=250	PVC STEEL WIRE PIPE D=18 D=13 L=250
2	F050003	6	卡箍 $\Phi$ 10-16	SCREW CLAMP $\Phi$ 10-16
3	F020002	2	快速接头 1/2	CONNECTOR 1/2
4	N010208	4	外六角-M5x12-不锈钢	SCREW M5x12 A2
5	N040023	4	弹垫-M5-不锈钢	LOCK WASHER M5
6	W020005	1	电磁阀组件 T55/70BT	SOLENOID VALVE ASSEMBLY T55/70BT
7	N030016	4	平垫 5x10x1 不锈钢	WASHER 5x10x1
8	F050014	1	内嵌钢丝水管 D=18 D=13 L=600	PVC STEEL WIRE PIPE D=18 D=13 L= 600
9	F050012	1	内嵌钢丝水管 D=18 D=13 L= 100	PVC STEEL WIRE PIPE D=18 D=13 L= 100
10	F020003	2	快速接头 3/8 D=12 d=10	CONNECTOR 3/8 D=12 d=10
11	F010006	1	蝶形球阀 1/2 直接头 D=10	BALL VALVE 1/2 CONNECTION STRAIGHT D=10
12	F020019	1	外丝接头 1/2-3/8 不锈钢	CONNECTOR 1/2-3/8 A2
13	A030034	1	球阀支架 35x43	SUPPORT 35x43
14	F010004	1	过滤器 3/8	FILTER 3/8



项目号 ITEM	零件号 P/N	数量 QTY	名称	DESCRIPTION
1	W010006	1	控制面板组件-T55BT-70BT	CONTROL PANEL ASSEMBLY T55BT/70BT
2	N010111	2	沉头十字自攻-3.5x13-不锈钢	SELF TAPPING SCREW 3.5x13 A2
3	N020016	6	自锁螺母-M5-镀锌	LOCK NUT M5 ZINC
4	B050027	1	手柄盒挡板 T70	BAFFLE T70
5	A060004	1	手柄盒橡胶压条 400x20	LAYERING 400x20
6	N010118	6	沉头内六角 M5X20-镀锌	SCREW M5x20 ZINC
7	N010029	4	外六角-M5x16-不锈钢	SCREW M5x16 A2
8	N040023	4	弹垫-M5-不锈钢	LOCK WASHER M5
9	N300040	4	平垫-5x15x1-不锈钢	WASHER 5*15*1 A2
10	C020007	1	手柄盒盖板 T55	SUPPORT COVER T55
11	W010155	1	电路板支架组件 T55BT	CIRCUIT BOARD SUPPORT ASEMBLY T55BT
12	C010004	1	手柄盒	HANDLE BAR
13	N010027	2	外六角-M3x20-不锈钢	SCREW M3x20 A2
14	N020045	2	自锁螺母-M3-不锈钢	LOCK NUT M3 A2
15	C020017	1	操控连接杆	ROCKER ARM
16	C020015	2	右操控把手	RIGHT LEVER

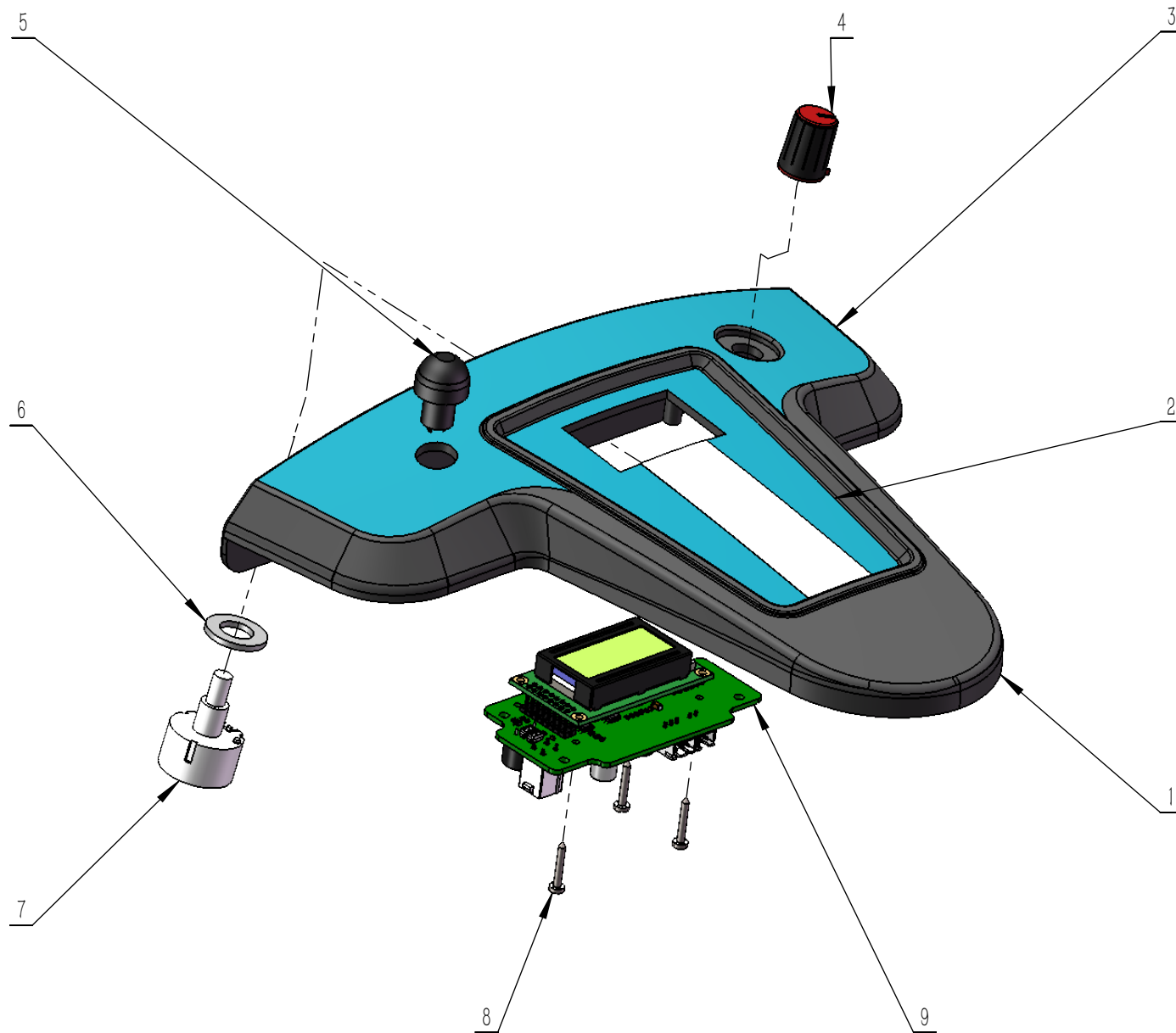


项目号 ITEM	零件号 P/N	数量 QTY	名称	DESCRIPTION
1	N010135	2	外六角-M5x20-不锈钢	SCREW M5x20 A2
2	N020046	6	螺母-M5-不锈钢	NUT M5 A2
3	E050004	1	保险座 80A	FUSE HOLDER 80A
4	N030016	2	平垫-5x10x1-不锈钢	WASHER 5x10x1
5	N020037	6	自锁螺母-M5-不锈钢	LOCK NUT M5 A2
6	E050005	1	保险 80A	FUSE 80A
7	N020024	2	自锁螺母-M8-不锈钢	LOCK NUT M8 A2
8	N020045	4	自锁螺母-M3-不锈钢	LOCK NUT M3 A2
9	N020006	1	自锁螺母-M6-不锈钢	LOCK NUT M6 A2
10	N030021	8	平垫-3x7x0.5-尼龙	WASHER 3x7x0.5 NYLON
11	E020029	2	防水微动开关-250V-16A-常开	MICROSWITCH 250V 16A NORMALLY SWITCH ON
12	N030022	1	平垫-6x18x1.6-不锈钢	WASHER 6x18x1.6 A2
13	N020044	4	螺母-M3-不锈钢	NUT M3 A2
14	B070011	1	弹簧 0.8x10x55	SPRING 0.8x10x55
15	N020005	1	螺母-M6-不锈钢	NUT M6 A2
16	N010013	1	外六角-M6x20-不锈钢	SCREW M6x20 A2
17	N010027	4	外六角-M3x20-不锈钢	SCREW M3x20 A2
18	N090003	1	刹车手柄胶套 20x60	RUBBER SLEEVE 20x60
19	A020003	1	刹车手柄 240x20	BRAKE HANDLE 240x20
20	B060032	1	刹车压簧 0.5x5x25	SPRING 0.5x5x25
21	A050008	1	刹车锁 D4	BRAKE LOCK Φ4
22	N020042	1	自锁螺母-M4-不锈钢	LOCK NUT M4 A2
23	N010006	4	外六角-M6x20-镀锌	SCREW M6x20 ZINC
24	N040001	5	弹垫-M6-镀锌	LOCK WASHER M6 ZINC
25	N030008	3	平垫-6x18x1.6-镀锌	WASHER 6x18x1.6 ZINC
26	N020001	1	自锁螺母-M8-镀锌	LOCK NUT M8 ZINC
27	N030006	2	平垫-8x16x1.6-镀锌	WASHER 8x16x1.6 ZINC
28	N020012	4	自锁螺母-M6-镀锌	LOCK NUT M6 ZINC
29	N010028	1	外六角-M4x16-不锈钢	SCREW M4x16 A2
30	N010007	1	外六角-M8x25-镀锌	SCREW M8x25 ZINC

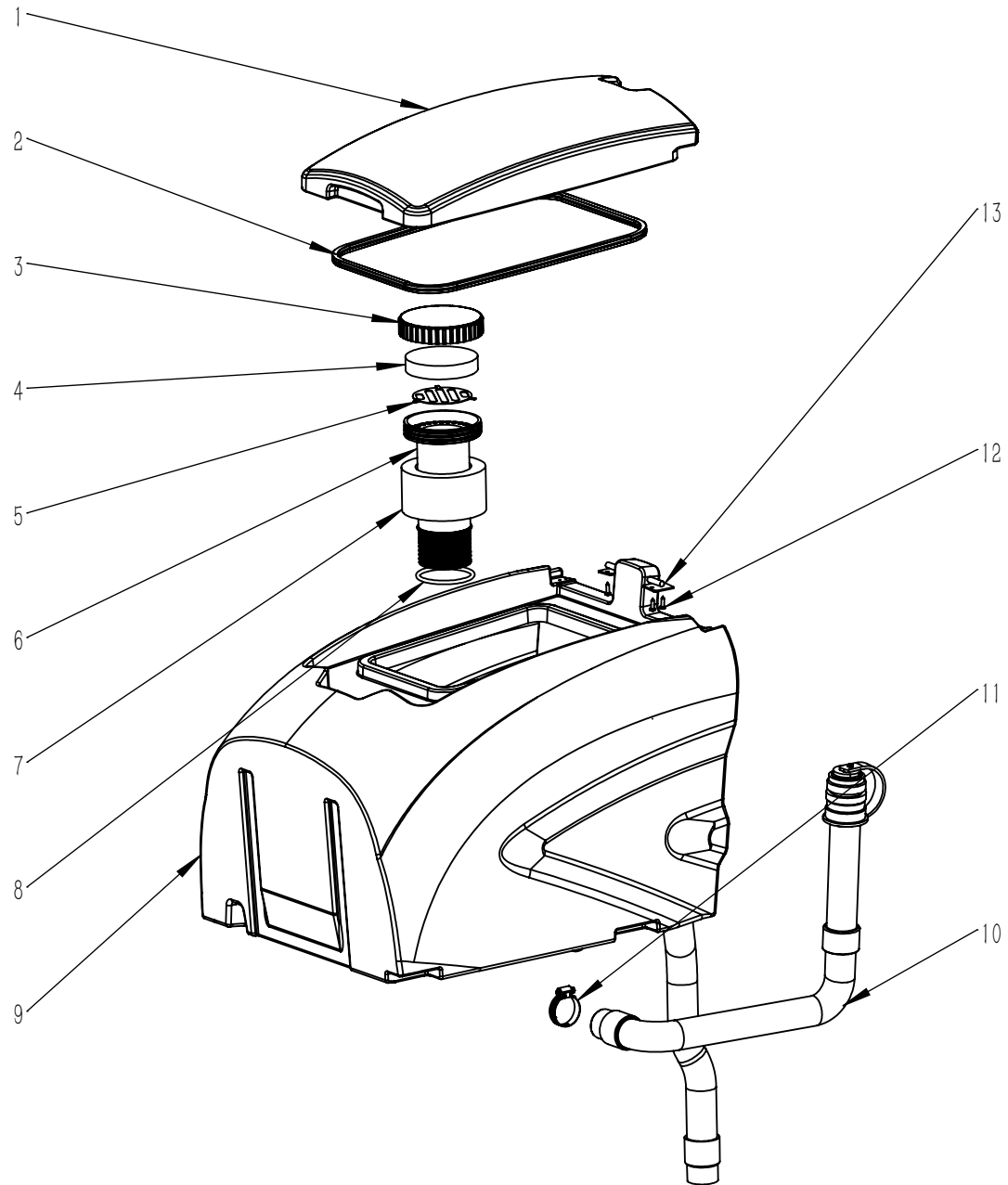


项目号 ITEM	零件号 P/N	数量 QTY	名称	DESCRIPTION
31	B060029	1	刹车线 L=980	CABLE L=980
32	A020004	1	刹车手柄支架 130x57.5	SUPPORT 130x57.5
33	N010016	3	沉头内六角-M6x20-不锈钢	SCREW M6x20 A2
34	N010066	4	沉头内六角-M5x25-不锈钢	SCREW M5x25 A2
35	A020046	1	电路板支架 KDS	CIRCUIT BOARD SUPPORT KDS
36	E040080	1	控制器-KDS-有驱 24V	CONTROLLER KDS WITH TRACTION 24V

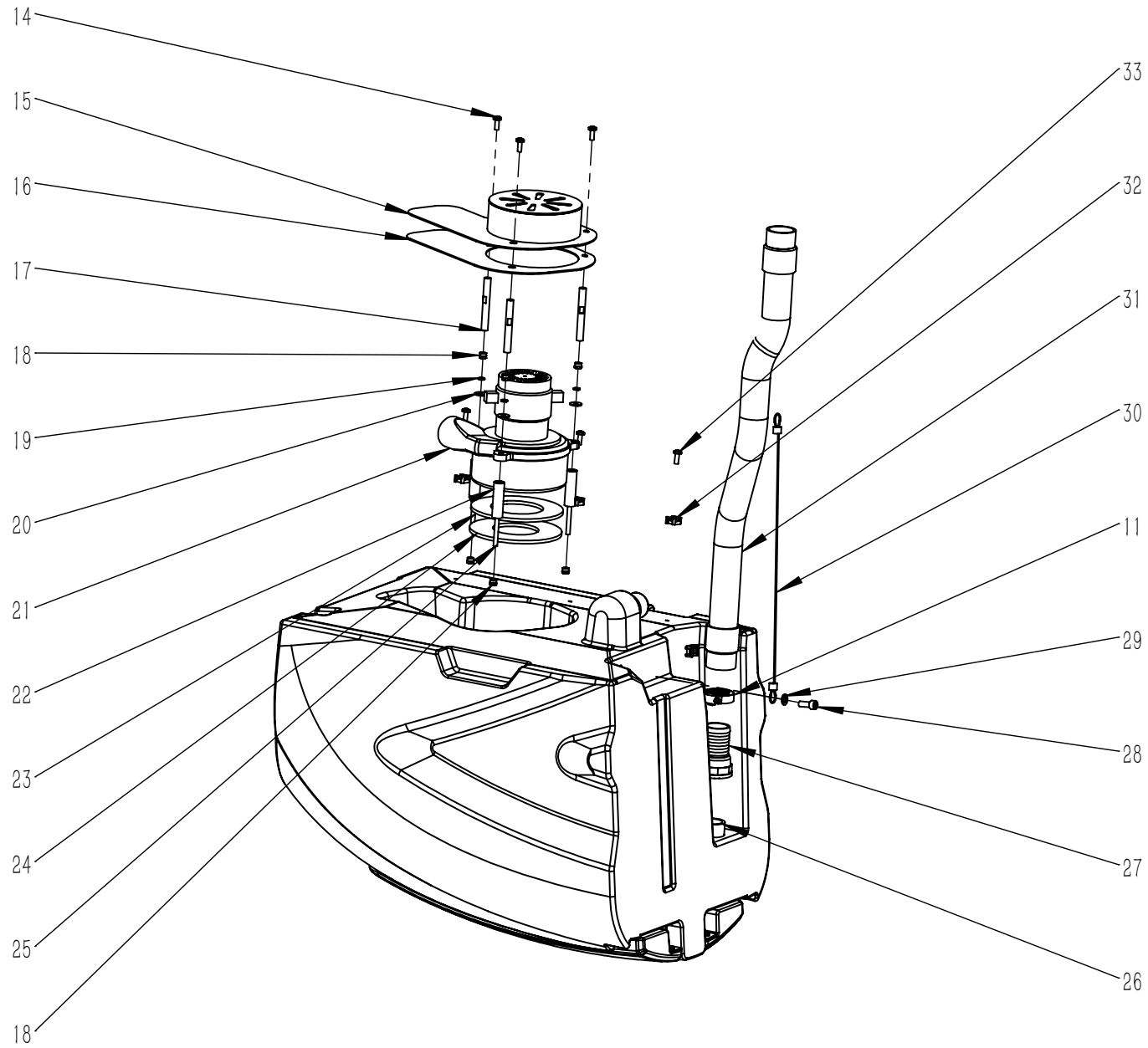




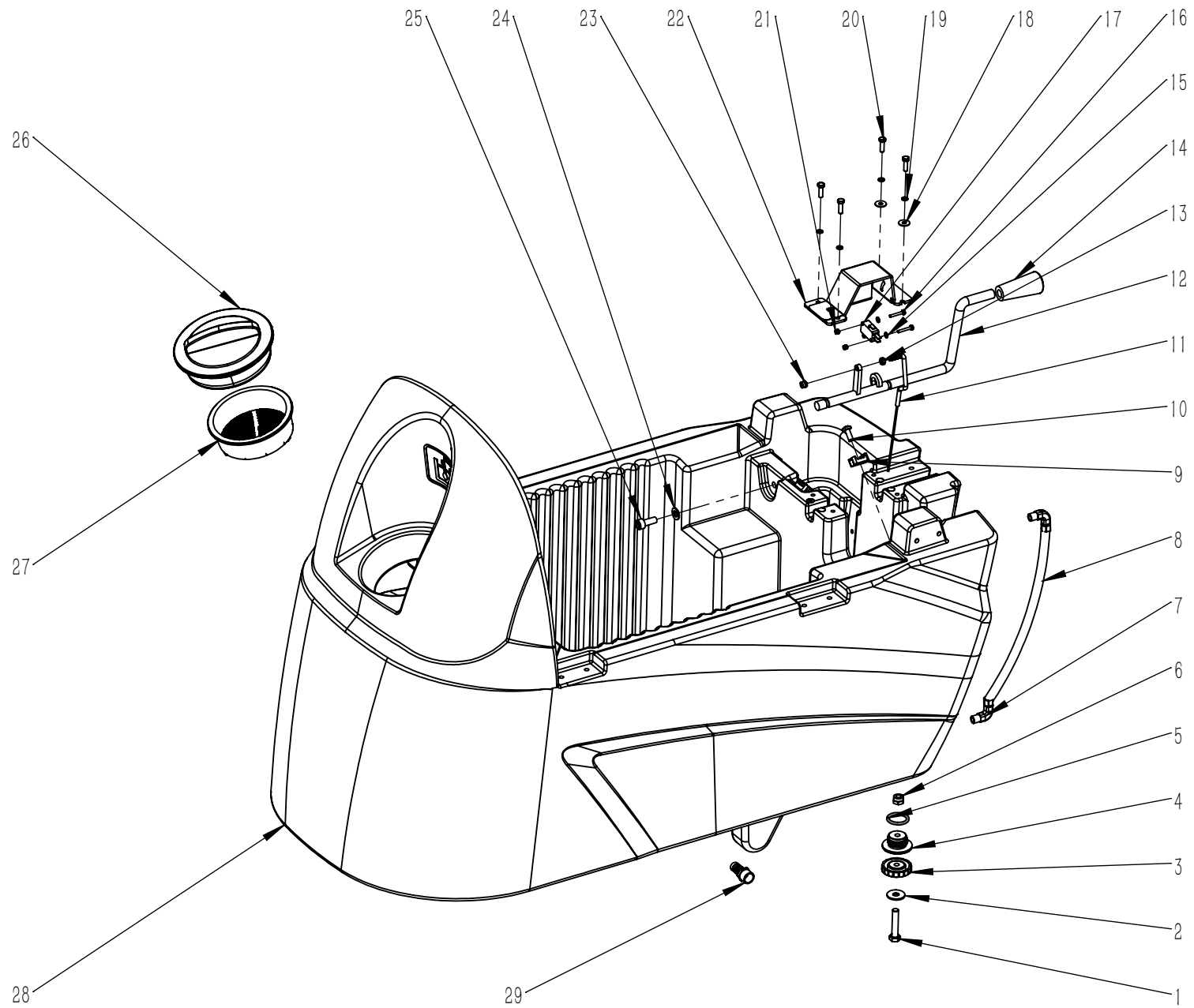
项目号 ITEM	零件号 P/N	数量 QTY	名称	DESCRIPTION
1	C020013	1	控制面板-T55-T70	CONTROL PANEL T55/70
2	C040001	1	控制面板标签 T55BT	CONTROL PANEL LABEL T55BT
3	C040011	1	控制面板标签 T55B	CONTROL PANEL LABEL T55B
4	E020009	1	调速开关旋帽	TURN CAP
5	E020001	1	选择按钮	BUTTON
6	N030004	1	平垫-10x20x2-镀锌	WAHSE 10x20x2 ZINC
7	E020003	1	调速开关	SPEED SWITCH
8	N010228	3	十字盘头自攻螺钉-ST2.2x16-不锈钢	SELF TAPPING SCREW ST2.2x16 A2
9	E040128	1	二合一面板 KDS	TWO-SIDED PANEL KDS



项目号 ITEM	零件号 P/N	数量 QTY	名称	DESCRIPTION
1	C010003	1	污水箱盖板	RECOVERY TANK COVER
2	N090010	1	污水箱上盖密封条 L=1280	RUBBER SEAL STRIP L=1280
3	C020019	1	吸水口盖子 D118x24	COVER $\Phi$ 118x24
4	F040002	1	吸水口消音海绵 $\Phi$ 103x20	SPONGE $\Phi$ 103x20
5	A030063	1	吸水口挡板	BAFFLE
6	C020018	1	吸水口主体 $\Phi$ 74x210	SUCTION BODY $\phi$ 74x210
7	F040004	1	浮球 $\Phi$ 80x64	FLOATER $\Phi$ 80x64
8	N090042	1	O 型密封圈内径 $\Phi$ 67 $\times$ 线径 $\Phi$ 6	O RING $\Phi$ 67x $\Phi$ 6
9	C010006	1	污水箱 55L	RECOVERY TANK 55L
10	F060001	1	排污管 D38x1040	DRAINAGE PIPE D38x1040
11	F050006	2	卡箍 D33-57	SCREW CLAMP $\Phi$ 33-57
12	N010052	4	圆头十字自攻螺丝-M4.2x16-不锈钢	SELF TAPPING SCREW M4.2x16 A2
13	A010001	2	箱盖固定板 34x30	PLAQUE 34x30

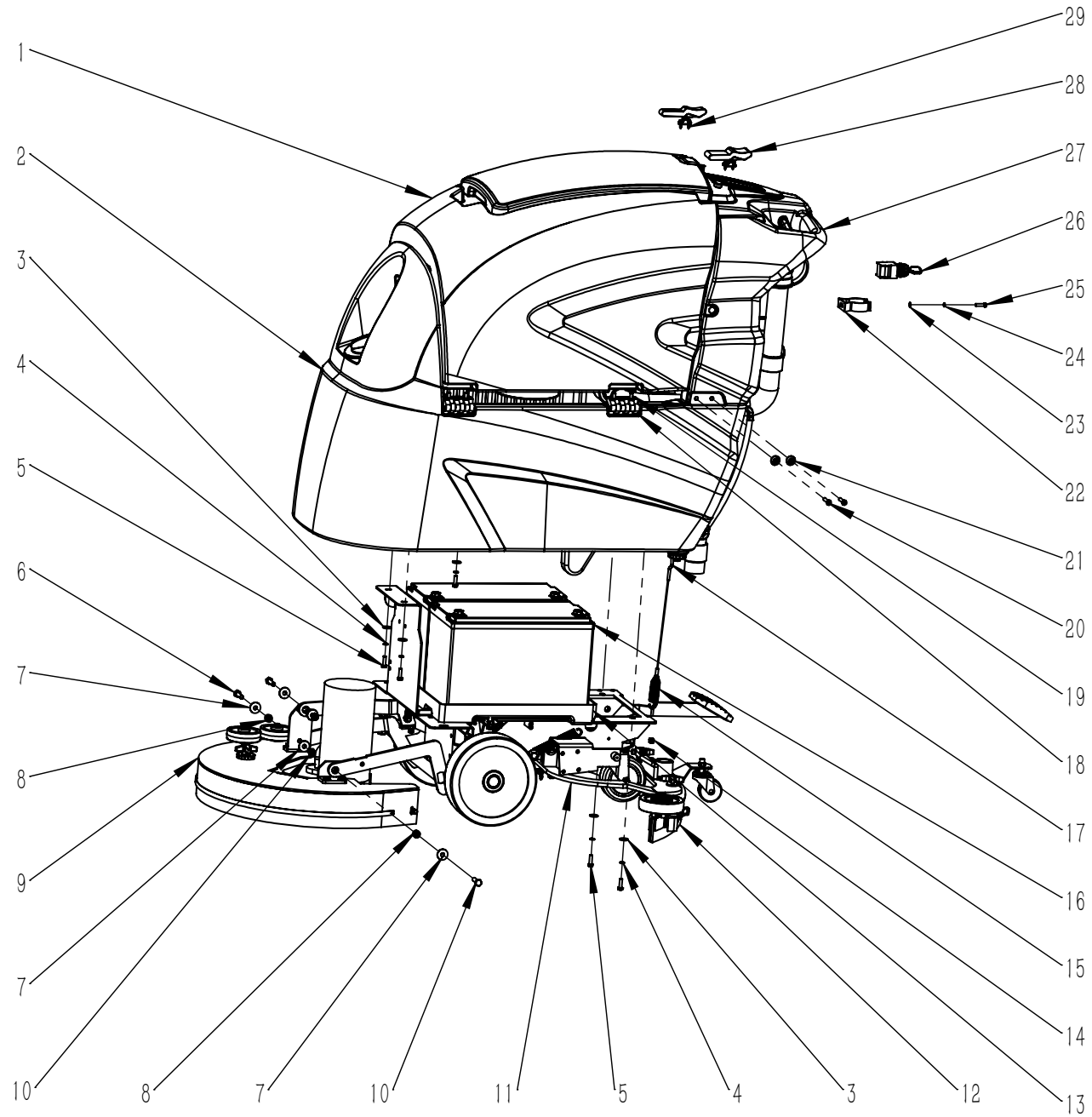


项目号 ITEM	零件号 P/N	数量 QTY	名称	DESCRIPTION
14	N010105	3	盘头十字-M6x16-不锈钢	SCREW M6x16 A2
15	A040083	1	消音盖板 T55	MUFFLER COVER T55
16	C020105	1	消音棉 T55	SOUNDPROOF COTTON T45
17	B020035	3	铜螺柱 L=82	COPPER STUD L=82
18	N020012	6	自锁螺母-M6-镀锌	LOCK NUT M6 ZINC
19	N040001	3	弹垫-M6-镀锌	LOCK WASHER M6 ZINC
20	N030008	3	平垫-6x18x1.6-镀锌	WASHER 6x18x1.6 ZINC
21	E040001	1	吸水电机 24V 390W 119436-13	VACUUM MOTOR 24V 390W 130805-13
22	B050029	3	支撑套管 55	SLEEVING 55
23	F040005	1	3M 背胶 Φ (140-70)	3M ADHESIVES GUM φ (140-70)
24	F040001	1	吸水电机消音垫 D140x5	SPONGE Φ 140x5
25	N100008	3	螺杆 M6×100	SCREW M6x100mm
26	C020008	1	污水进水口弯头 D.38	CONNECTOR BEND D.38
27	C020009	1	污水进水口直接头 D.38	CONNECTOR STRAIGHT D.38
28	N010040	1	内六角圆柱头螺栓-M8x20-不锈钢	SCREW M8x20 A2
29	N030010	1	平垫-8x16x1.6-不锈钢	WASHER 8x16x1.6 A2
30	B060031	1	污水箱拉线 L=445	CABLE L=445
31	F060002	1	吸污管 D.38x1250	SUCTION HOSE D.38x1250
32	N090002	4	扎带固定座 23x16	SUPPORT 23x1
33	N010073	4	圆头十字螺丝-M5x16-镀锌	SCREW M5x16 ZINC

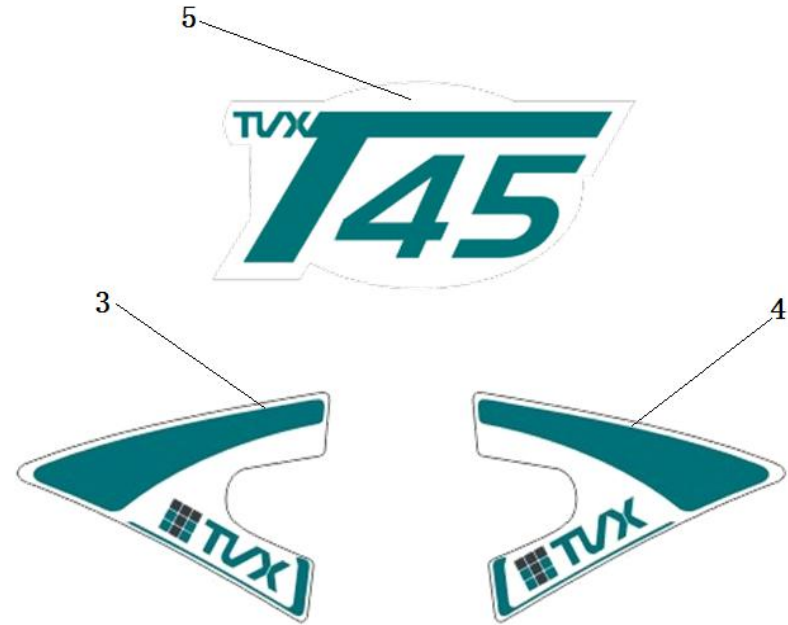
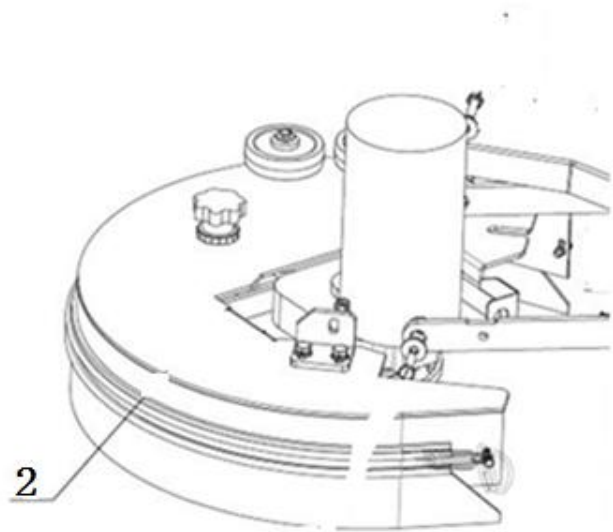


项目号 ITEM	零件号 P/N	数量 QTY	名称	DESCRIPTION
1	N010068	1	外六角 M8X40 不锈钢	SCREW M8x40 A2
2	N030028	1	平垫 8x24x2 不锈钢	WASHER 8x24x2 A2
3	N020009	1	花型螺母 M8	NUT M8
4	B020006	1	堵头 3/4 英寸	PLUG 3/4"
5	N090046	1	O 型密封圈 $\Phi 23$ (内径) $\times \Phi 3.5$ (线径)	O RING $\Phi 23 \times \Phi 3.5$
6	N020024	1	自锁螺母 M8 不锈钢	LOCK NUT M8 A2
7	F020021	2	水位显示管安装头 M10	LIQUID LEVEL DISPLAY TUBE MOUNTING HEAD M10
8	F050008	1	水位显示管 310	WATER LEVEL TUBE 310
9	N090002	2	扎带固定座 23x16	SUPPORT 23x16
10	N010073	2	圆头十字螺丝 M5x16 镀锌	SCREW M5x16 ZINC
11	B060034	1	扒头拉线 L=355	CABLE L=355
12	A050020	1	提升摇臂 T55	LEVER T55
13	N020014	1	螺母-M5-镀锌	NUT M5 ZINC
14	N100007	1	提升摇臂把手 M12	HANDLE M12
15	N040021	4	塑料垫片 3x7x0.5	WASHER 3x7x0.5 PLASTIC
16	N010027	2	外六角-M3x20-不锈钢	SCREW M3x20 A2
17	E020030	1	防水微动开关-250V-16A-常闭	MICROSWITCH 250V 16A NORMALLY SWITCH OFF
18	N030013	2	平垫-5x15x1.2-镀锌	WASHER 5x15x1.2 ZINC
19	N040007	4	弹垫-M5-镀锌	LOCK WASHER M5 ZINC
20	N010025	4	外六角-M5x16-镀锌	SCREW M5x16 ZINC
21	N020045	2	自锁螺母-M3-不锈钢	LOCK NUT M3 A2
22	A050021	1	提升开关支架 T55	SUPPORT T55
23	N020016	1	自锁螺母-M5-镀锌	LOCK NUT M5 ZINC
24	N030010	1	平垫-8x16x1.6-不锈钢	WASHER 8x16x1.6 A2
25	N010040	1	内六角圆柱头螺栓-M8x20-不锈钢	SCREW M8x20 A2
26	C020005	1	清水箱注水口盖子 D115	THREADED COVER $\Phi 115$
27	C020006	1	清水箱注水口滤网 D110	FILTER $\Phi 110$
28	C010005	1	清水箱 55L	SOLUTION TANK 55L
29	F020003	1	快速接头-3/8-D=12-d=10	CONNECTOR 3/8 D=12 d=10

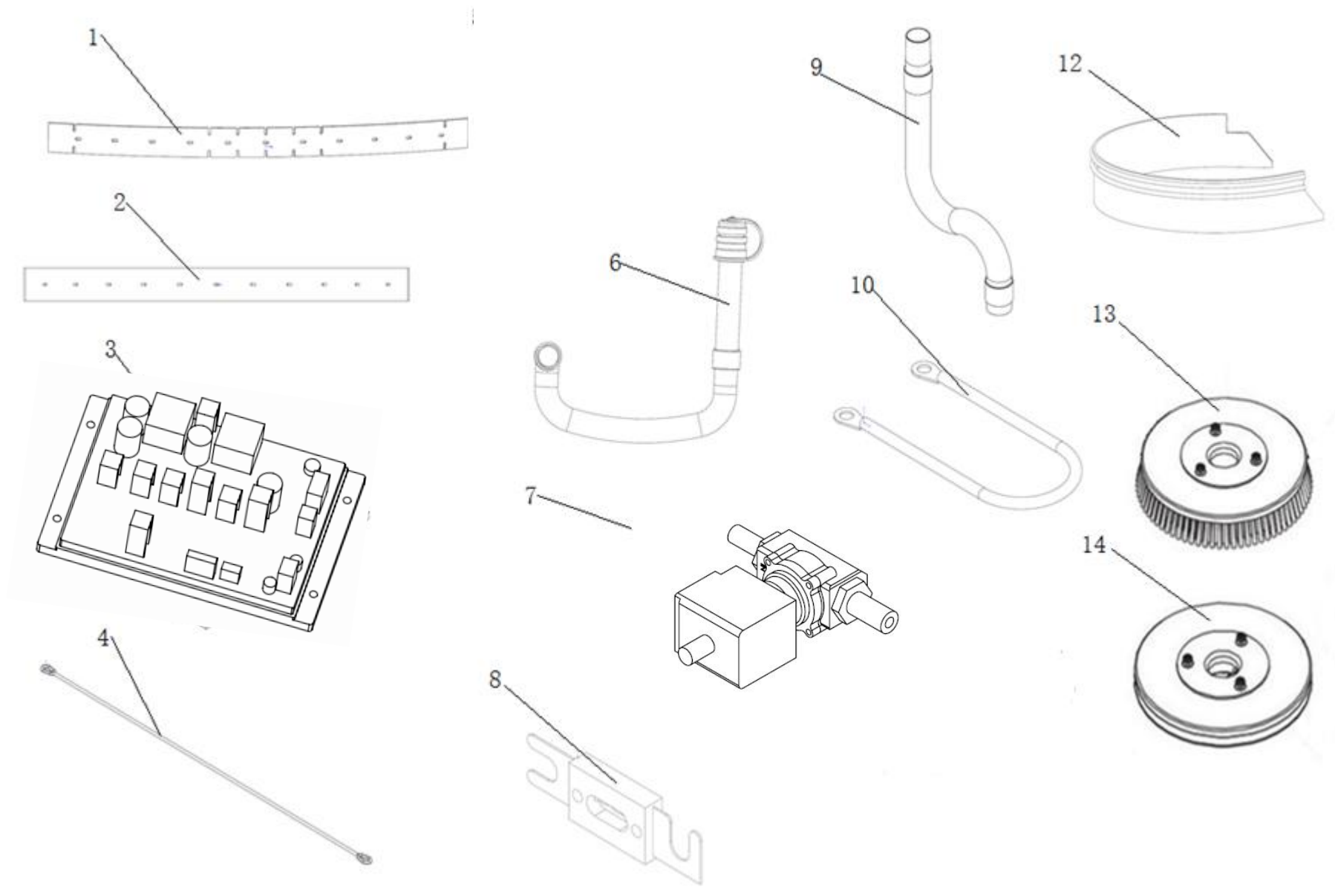




项目号 ITEM	零件号 P/N	数量 QTY	名称	DESCRIPTION
1	W010016	1	污水箱组件 T55B	RECOVERY TANK ASSEMBLY T55B
2	C010005	1	清水箱 55L	SOLUTION TANK 55L
3	N030008	6	平垫-6x18x1.6-镀锌	WASHER 6x18x1.6 ZINC
4	N040001	6	弹垫-M6-镀锌	LOCK WASHER M6 ZINC
5	N010006	6	外六角-M6x20-镀锌	SCREW M6x20 ZINC
6	N010002	3	外六角-M8x30-镀锌	SCREW M8x30 ZINC
7	N030027	6	平垫-8x24x2-镀锌	WASHER 8x24x2 ZINC
8	B020001	3	铜套 8x15x8.5	BUSHING 8x15x8.5
9	W010060	1	机头组件 D518	NOSE ASSEMBLY D518
10	N020001	3	自锁螺母-M8-镀锌	LOCK NUT M8 ZINC
11	W010063	1	扒头支架组件-T55-T70	SQUEEGEE SUPPORT ASSEMBLY T55/T70
12	W010045	1	扒头组件-760-单轮	SQUEEGEE ASSEMBLY 760 SINGLE WHEEL
13	C020010	1	电池座 370x364x45	BATTERY BASE 370x364x45
14	N020012	1	自锁螺母 M6 镀锌	LOCK NUT M6 ZINC
15	B070017	1	单向拉簧 3x20x75.4	SPRING 3x20x75.4
16	E040006	2	电池 AGM-12V-100Ah-2-中文	BATTERY 12V 100Ah AGM
17	B060034	1	扒头拉线 L=355	CABLE L=355
18	C020011	3	合页 40x14	HINGE 40x14
19	N010017	12	沉头内六角-M6x25-发黑	SCREW M6x25
20	N010116	4	沉头十字-M6x35-不锈钢	SCREW M6x35 A2
21	C020028	4	异形垫片 D5	WASHER Φ5
22	C020014	1	管托 D43	SCREW CLAMP Φ43
23	N030016	1	平垫-5x10x1-不锈钢	WASHER 5x10x1
24	N040023	1	弹垫-M5-不锈钢	LOCK WASHER M5
25	N010135	1	外六角-M5x20-不锈钢	SCREW M5x20 A2
26	W020013	1	钥匙开关组件 双开	KEY SWITCH ASSEMBLY
27	W010067	1	手柄盒组件-T55-T70	HANDLE BOX ASESEMBLY T55/T70
28	N090004	2	橡胶搭扣 50	RUBBER HASP 50
29	N010052	4	圆头十字自攻螺丝-M4.2x16-不锈钢	SELF TAPPING SCREW M4.2x16 A2



项目号 ITEM	零件号 P/N	数量 QTY	名称	DESCRIPTION
1	W010078	1	包装组件 1 T55	PACKAGING ASSEMBLY 1 T55
2	C030007	1	刷盘防溅条 85x1190	RUBBER SKIRT 85x1190
3	C040003	1	机器左侧标签 T45/T55/T70	LEFT LABEL T45/T55/T70
4	C040004	1	机器右侧标签 T45/T55/T70	RIGHT LABEL T45/T55/T70
5	C040005	1	标识标签 T55	DECAL T55
6	C040025	1	提升摇臂标识	LEVER LABEL
7	C040026	1	刹车标识	BRAKE LABEL
8	M010015	1	塑料包装袋 1400x700x1000	PLASTIC BAG 1400x700x1000
9	M020002	1	木托盘 T55 1360x620x120	WOODEN PALLETS T55 1360x620x120
10	M020008	4	三角挡块 50x50x100	TRIANGULAR BLOCK 50x50x100
11	W010079	1	包装组件 2 T55	PACKAGING ASSEMBLY 2 T55
12	M010001	1	纸箱 T55 1360x620x1070	CARTON T55 1360x620x1070
13	M010002	1	纸箱上盖 T55 1380x660x100	CARTON COVER T55 1380x660x100
14	M010009-SINGLE	1	纸盒扒头 760 820*270*120	760 SQUEEGEE CARTON BOX 820x270x120
15	M010014	1	说明书自封袋 340x240mm	ZIPLOCK 340x240mm
16	M020006	4	木条 T55 40X40X1050	BATTEN 55/70L 40X40X1050
17	M020007	12	支撑护角 50x50x100	SUPPORTING CORNER
18	P010004	1	保修卡	WARRANTY CARD
19	P010012	1	测试报告	TEST REPORT
20	W020011	1	电源连接线 500	POWER CABLE 500
21	W020008	1	电池连接线 500	BATTERY CABLE 500



项目号 ITEM	零件号 P/N	名称	DESCRIPTION
1	C030014	前刮条 橡皮 3x50x785	FRONT SQUEEGE BLADE RUBBER 3x50x785
2	C030015	后刮条 橡皮 4.5x53x835	REAR SQUEEGE BLADE RUBBER 4.5x53x835
3	E040080	控制器-KDS-有驱 24V	CONTROLLER KDS WITH TRACTION 24V
4	B060034	扒头拉线 L=355	CABLE L=355
6	F060001	排污管 D.38x1040	SEWAGE PIPE D.38x1040
7	W020005	电磁阀组件-T55-70BT	SOLENOID VALVE ASSEMBLY T55/70BT
8	E050005	保险 80A	FUSE 80A
9	F060002	吸污管 D.38x1250	SUCTIONHOUSE D.38x1250
10	W020008	电池短接线	BATTERY SHORT WIRING
12	C030007	刷盘防溅条 85x1190	RUBBER SKIRT 85x1190
13	N150001	刷盘 19"	BRUSH-PPL 19"
14	N150004	针盘 19"	PAD HOLDER 19"