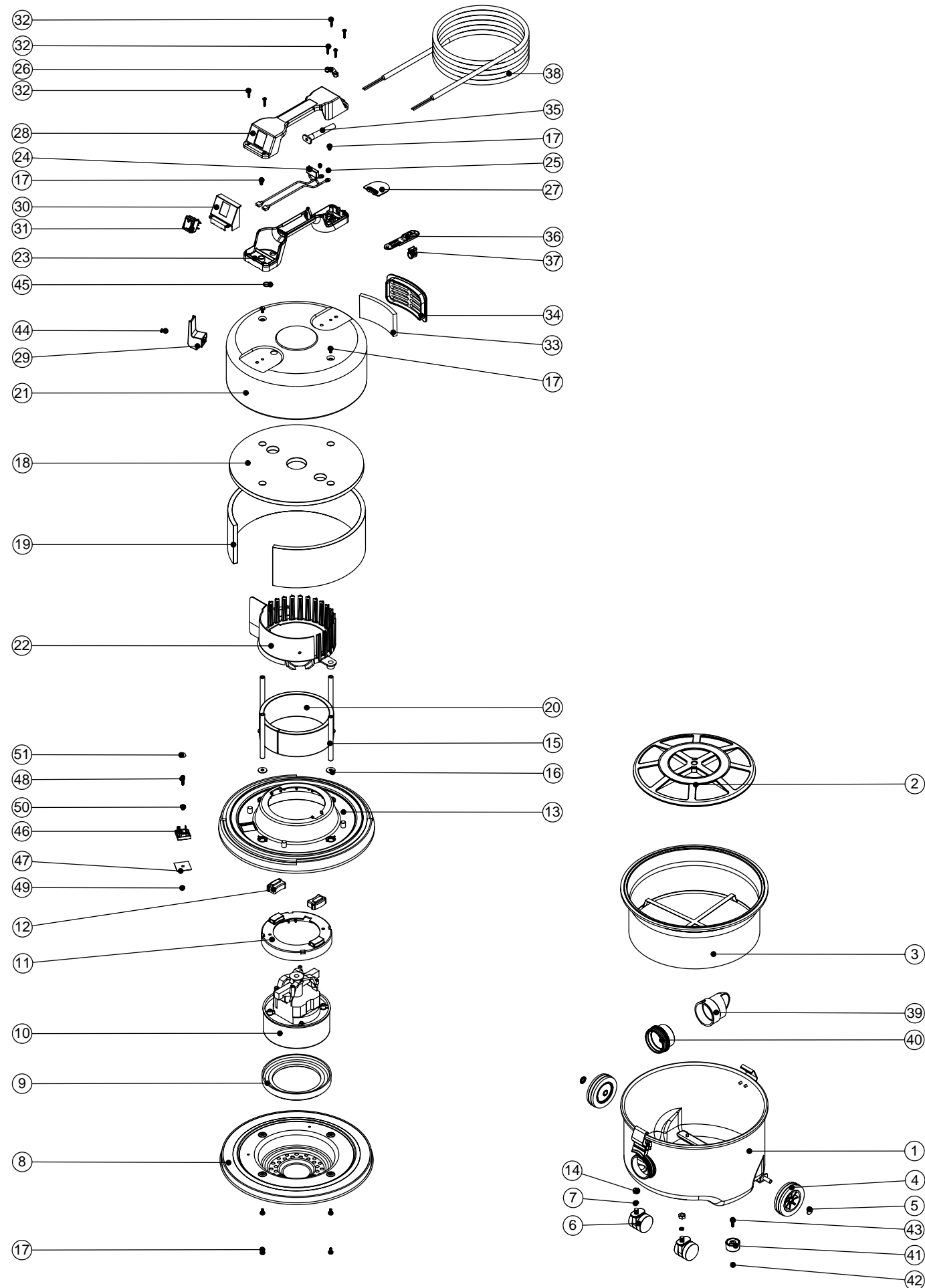


# Numatic International Spare Parts

Model No : AVQ250-2 (2 WIRE)

234458  
DRAWING: EXP-0888 ISS:A02  
14/08/2007

NB: FOR WIRING SEE DRAWING: WD-0312



# Numatic International Spare Parts

Model No: AVQ250-2 (2 WIRE)

POS:	ITEM NO:	DESCRIPTION:	COMMENTS:
1	400144	RED CONTAINER	
	401431	GREY CONTAINER	
	400146	BLUE CONTAINER	
2	209200	12 INCH FILTER GRID	
3	207109	12 INCH FILTER (DOUBLE BOTTOM) 160GRM SMS	INCLUDES ITEM 2 (209200)
4	204008	3 INCH BLACK WHEEL	
5	204020	8MM CHROME HUB CAP	
6	204056	40MM BLACK CASTOR	
7	219019	M8 SINGLE COIL SPRING WASHER	
8	401272	BLACK BOTTOM MOTOR HOUSING	
9	227882	BOTTOM MOTOR GASKET	
10	205415	120V 2 STAGE THRO FLOW MOTOR (DL21101TA) TCO (AIRCRAFT)	
11	227886	MOTOR SPACER (LAMB DAF MOTOR)	
12	227885	MOUNTING RUBBER	
13	325577	MODIFIED TOP MOTOR HOUSING	
14	219079	M8 PLAIN NUT	
15	208003	115MM LONG ALUMINIUM SPACER	
16	219876	1/4 X 3/4 X 16G PLAIN WASHER TABLE 5 ZINC PLATED	
17	219047	M5 X 10MM LONG POZI PAN SEMS SCREW	
18	203005	TOP FELT	
19	203009	SIDE FELT INSULATION	
20	203020	POD SIDE FELT	
21	401194	BLACK HEAD TOP	
22	227883	NOISE REDUCTION POD	
23	320686	HANDLE BASE MOULDING	
24	220142	SUPPRESSOR ASSEMBLY	
25	219090	M4 X 8MM LONG POZI PAN SEMS SCREW	
26	227564	PLUG LOCATION CLAMP	
27	220131	CABLE CLAMP	
28	227627	HANDLE COVER (CUT OUT FOR 1 SWITCH)	
29	206006	CABLE REELING HOOK	
30	227635	SWITCH MOUNTING BRACKET (1 SWITCH)	
31	220552	RED ROCKER SWITCH	
32	219107	No6 X 5/8 INCH LONG POZI PAN PLASTITE SCREW	
33	206260	AIR DIFFUSER PAD	
34	225064	OUTLET GRILL	
35	220923	STRESS RELIEF	
36	227636	STRAIN RELIEF	
37	227637	CABLE CLIP	
38	220311	MAINS CABLE (2 WIRE/NO PLUG)	
39	206004	TRAPIT CONNECTOR BEND	
40	206034	TRAPIT CONNECTOR STRAIGHT SHORT	
41	206033	PLASTIC FOOT	
42	219072	M5 FULL NUT	
43	219045	M5 X 16MM LONG POZI PAN SEMS SCREW	
44	221151	M4 X 12MM LONG POZI PAN SCREW	
45	219363	O-RING	
46	220021	RECTIFIER	
47	220521	INSULATION PLATE	
48	219686	M4 X 20MM LONG STAINLESS STEEL POZI PAN MACHINE SCREW	
49	219360	M4 NYLON HEX NUT	
50	219615	CAP RING	
51	219616	COVER CAP	