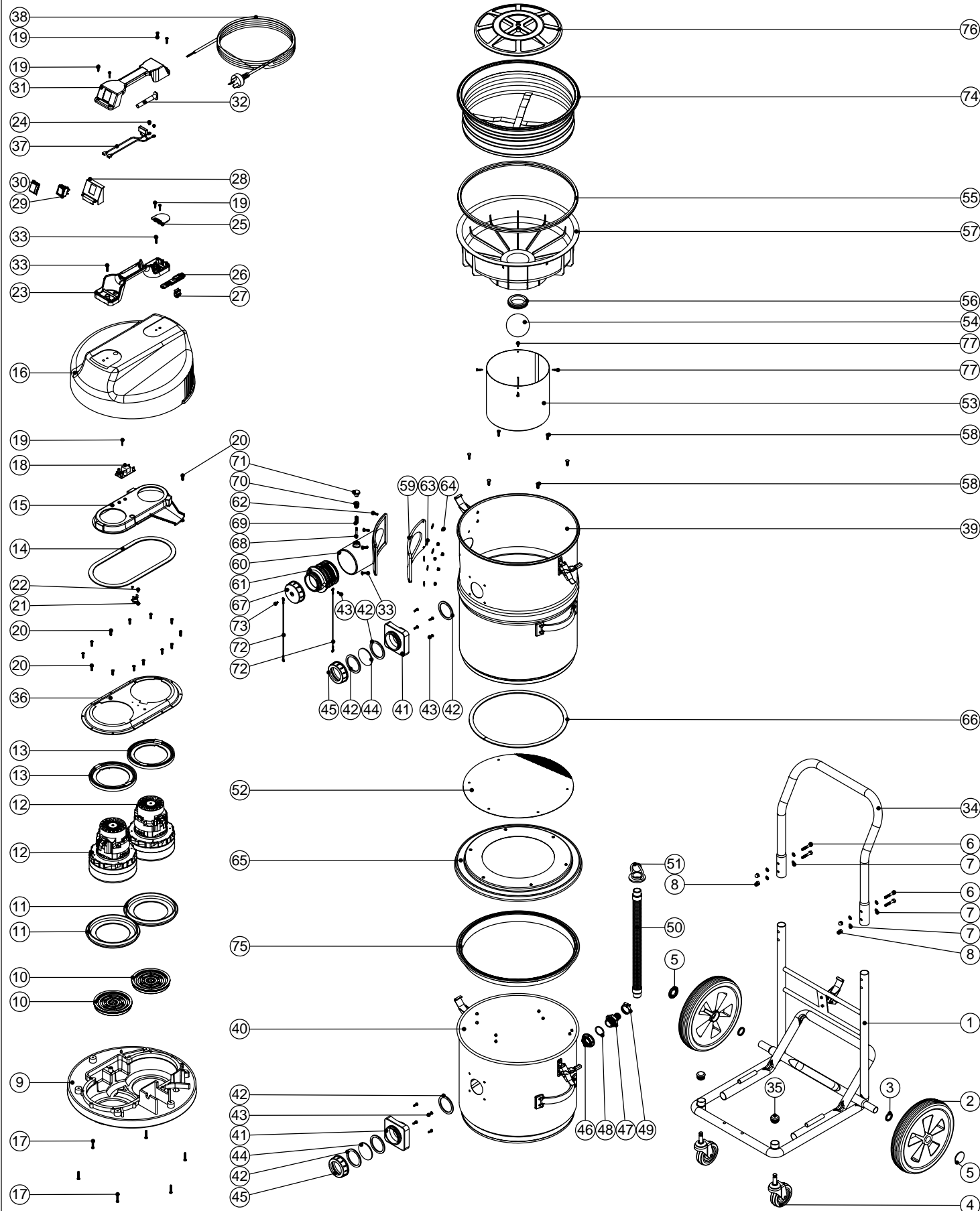


Numatic International Spare Parts

Model No: SSIVD750-2

234434
DRAWING: EXP-0865 ISS:A02
12/06/2006



Numatic International Spare Parts

Model No: SSIVD750-2

POS:	ITEM NO:	DESCRIPTION:	COMMENTS:
1	305017	HEAVY DUTY FIXED STAINLESS STEEL CHASSIS & TOGGLE ASSEMBLY	
2	204028	10 INCH WHEEL	
3	219505	NYLON WASHER	
4	204060	3 INCH CASTOR	
5	219504	STARLOCK PUSH ON FASTENER	
6	219064	M6 X 35MM LONG HEX BOLT	
7	219007	M6 FORM B WASHER	
8	219080	M6 DOMENUT	
9	301048	PROCESSED BOTTOM MOTOR HOUSING	
10	206010	FAN GUARD	
11	202005	MOTOR BOTTOM GASKET	
12	205411	240V 2 STAGE D.I BYPASS ACUSTEK MOTOR (BL21104)(MARKED 230V)	
13	227925	TOP MOTOR GASKET	
14	202012	GASKET	
15	227928	570 AIR SEPERATOR (LAMB BYPASS MOTOR DUPLEX)	
16	227043	COVER MOULDING	
17	219369	No8 X 1 INCH LONG POZI PAN STAINLESS STEEL PLASTITE SCREW	
18	220555	230V DELAY START MODULE	
19	219107	No6 X 5/8 INCH LONG POZI PAN PLASTITE SCREW	
20	219370	No8 X 5/8 INCH LONG PLASTITE STAINLESS STEEL SCREW	
21	220532	THERMOSTAT	
22	219491	M5 X 3MM LONG POZI PAN TAPTITE SCREW	
23	320686	HANDLE BASE MOULDING	
24	219090	M4 X 8MM LONG POZI PAN SEMS SCREW	
25	220131	CABLE CLAMP	
26	227636	STRAIN RELIEF	
27	227637	CABLE CLIP	
28	227635	SWITCH MOUNTING BRACKET (1 SWITCH)	
29	220843	BLUE ROCKER SWITCH	
30	206573	SWITCH COVER (PLUG HANDLE)	
31	227627	HANDLE COVER (CUT OUT FOR 1 SWITCH)	
32	220923	STRESS RELIEF	
33	219546	M5 X 20MM LONG POZI PAN SEMS SCREW	
34	402200	BLACK PLASTIC COATED HANDLE	
35	20637V	25.4MM TUBE END STOP	
36	325526	TOP MOTOR HOUSING (DUPLEX)	
37	220142	SUPPRESSOR ASSEMBLY	
38	236044	10.0M X 1.00MM X 2 CORE CABLE (AUSTRALIAN PLUG)	
39	500875	RED SWARF CONTAINER C/W TOGGLES & HANDLES ASSEMBLY	
40	500874	RED LIQUID CONTAINER C/W TOGGLES / BACK BRACKET & HANDLES ASSEMBLY	
41	206025	WET HOSE CONNECTOR FLANGE+ SNOOT	
42	202027	HOSE FLANGE GASKET	
43	219101	No8 X 1/2 INCH LONG POZI PAN PLASTIITE SCREW	
44	303634	SIGHT GLASS LENS	
45	306000	BLANKING CAP MODIFIED FOR SIGHT GLASS	
46	216192	3/4 INCH BSP BACK NUT	
47	216191	3/4 INCH HOSE TAIL + O RING GROOVE	
48	216193	O RING	
49	219509	STAINLESS STEEL JUBILEE CLIP	
50	213109	DUMP HOSE ASSEMBLY	
51	206058	HOSE CLOSURE	
52	303635	SWARF SEPERATOR DISC	
53	403014	FLOAT CAGE ASSEMBLY	
54	206026	POLYPROP BALL	
55	202036	FLOAT MOULD EXTRUSION SEAL	
56	220235	FLOAT GROMMET	
57	225101	FLOAT MOULDING	
58	219547	M5 X 16MM LONG POZI PAN STAINLESS STEEL SCREW	
59	202050	1/8 INCH A/B EXPANDED NEOPRENE GASKET	
60	206171	3 INCH CYCLONIC INLET CONNECTOR MACHINED	
61	206188	THREAD CONNECTOR MOULDING	
62	219045	M5 X 16MM LONG POZI PAN SEMS SCREW	
63	219644	M5 FORM G STAINLESS STEEL WASHER	
64	219076	M5 NYLON INSERT NUT	
65	400159	NUTSERTED BOTTOM SPINNING MESH SUPPORT (PAINTED RED)	
66	212090	900MM LONG X 12MM WIDE X 3MM HIGH INSEAL	
67	206363	BLANKING CAP	
68	206168	DRUM LOCKING PIN	
69	219353	COMPRESSION SPRING	
70	206169	DRUM LOCKING NUT	
71	206167	DRUM KNOB	
72	303121	BLANKING CAP FIX WIRE	
73	219301	No6 X 3/8 INCH LONG POZI PAN SELF TAP SCREW	
74	207166	WHITE FILTER + RING	
75	202045	FILTER GASKET MOULD + U GASKET	
76	209200	12 INCH FILTER GRID	
77	219329	M3.9 X 16MM LONG POZI PAN TAPTITE SCREW	