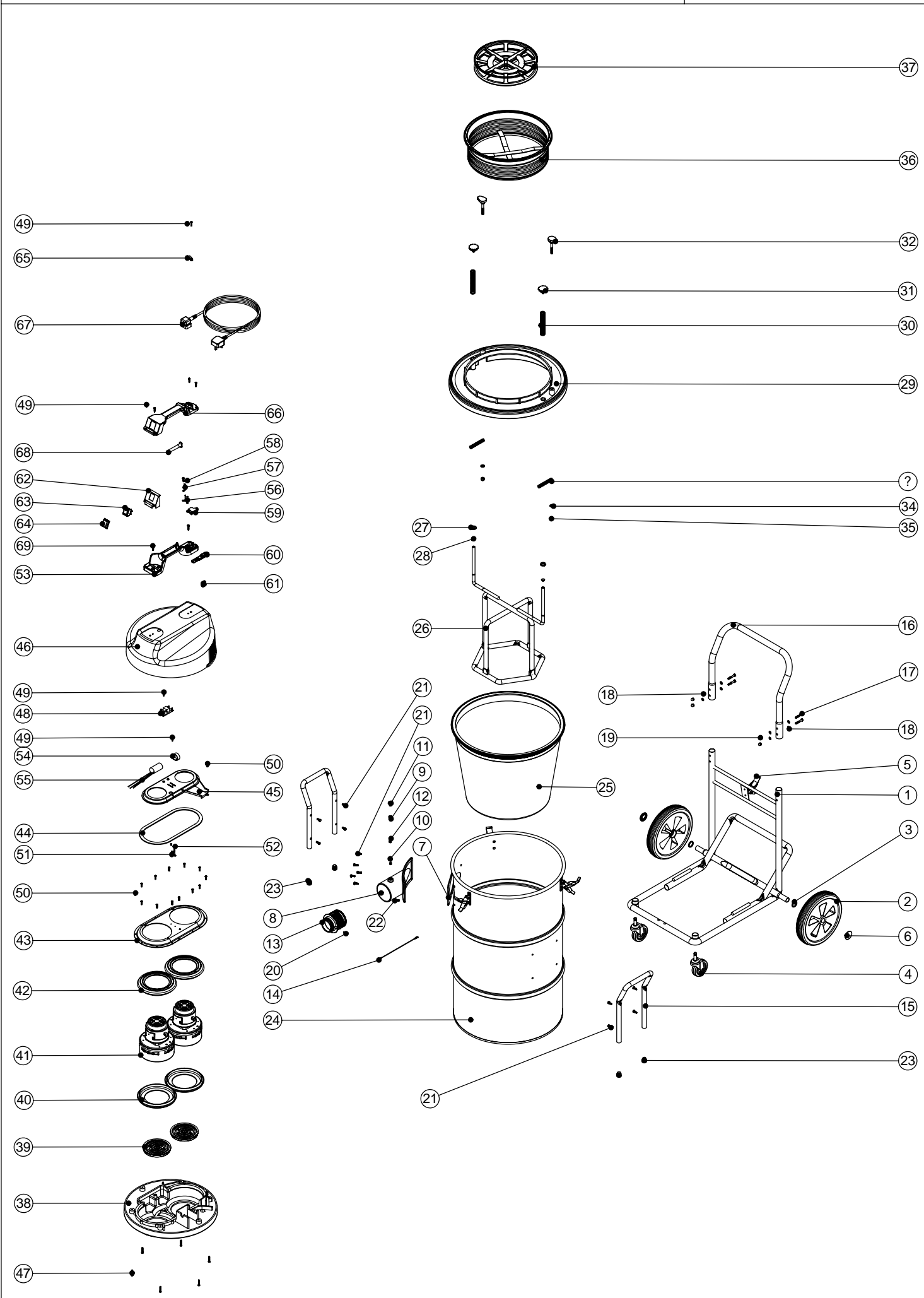


Numatic International Spare Parts

Model No: NTD-2003 EXPLODED DRAWING

234237
DRAWING: EXP-0668 ISS:A02
14/06/2006



Numatic International Spare Parts

Model No: NTD-2003 EXPLODED DRAWING

POS:	ITEM NO:	DESCRIPTION:	COMMENTS:
1	402016	BLACK HEAVY DUTY CHASSIS ASSEMBLY	
2	204028	10 INCH WHEEL	
3	219505	NYLON WASHER	
4	204060	3 INCH CASTOR	
5	206028	TOGGLE	
6	219504	STARLOCK PUSH ON FASTENER	
7	202050	1/8 INCH A/B EXPANDED NEOPRENE GASKET	
8	206171	3 INCH CYCLONIC INLET CONNECTOR MACHINED	
9	206169	DRUM LOCKING NUT	
10	206168	DRUM LOCKING PIN	
11	206167	DRUM KNOB	
12	219353	COMPRESSION SPRING	
13	206188	THREAD CONNECTOR MOULDING	
14	303121	BLANKING CAP FIX WIRE	
15	402011	BLACK HANDLE	
16	402202	BLACK PLASTIC COATED HANDLE	
17	219064	M6 X 35MM LONG HEX BOLT	
18	219007	M6 FORM B WASHER	
19	219080	M6 DOMENUT	
20	219101	No8 X 1/2 INCH LONG POZI PAN PLASTITE SCREW	
21	219045	M5 X 16MM LONG POZI PAN SEMS SCREW	
22	219050	M5 X 16MM LONG POZI PAN SCREW	
23	20638V	CSP-302 BLACK TUBE END STOP	
24	300199	CONNECTOR DRUM ASSEMBLY	
25	502016	FILTER ASSEMBLY	
26	402030	BLACK FILTER SHAKER ASSEMBLY	
27	206208	SEALING WASHER	
28	219345	12MM EXTERNAL CIRCLIP	
29	226021	BOTTOM PLATE MOULDING	
30	219333	COMPRESSION SPRING	
31	206241	SHAKER KNOB	
32	206242	HOOKEK KNOB	
33	219418	COMPRESSION SPRING	
34	219010	M8 FORM A WASHER	
35	219078	M8 NYLON INSERT NUT	
36	207030	WHITE FILTER ASSEMBLY	
37	209600	DOUBLE 12 INCH FILTER GRID (GROOVED CIRCULAR RIB)	
38	301048	PROCESSED BOTTOM MOTOR HOUSING	
39	206010	FAN GUARD	
40	202005	MOTOR BOTTOM GASKET	
41	205060	230V BP MOTOR	
	205062	110V BYPASS MOTOR	
42	202003	TOP MOTOR GASKET	
43	225063	TOP MOTOR HOUSING	
44	202012	GASKET	
45	225154	AIR SEPARATOR DUPLEX	
46	227043	COVER MOULDING	
47	219369	No8 X 1 INCH LONG POZI PAN STAINLESS STEEL PLASTITE SCREW	
	220556	115V DELAY START MODULE	
48	220555	230V DELAY START MODULE	
49	219107	No6 X 5/8 INCH LONG POZI PAN PLASTITE SCREW	
50	219370	No8 X 5/8 INCH LONG PLASTITE STAINLESS STEEL SCREW	
51	220532	THERMOSTAT	
52	219491	M5 X 3MM LONG POZI PAN TAPTITE SCREW	
	320291	HANDLE BODY MOULDING + INSERTS	
53	320835	HANDLE BASE MOULDING + INSERTS	
54	220288	30MM DIAMETER P-CLIP	
	220682	SUPPRESSOR ASSEMBLY	
55	220289	SUPPRESSOR	
56	206562	CONTACT PIN	
57	206563	EARTH CONTACT PIN	
58	219090	M4 X 8MM LONG POZI PAN SEMS SCREW	
59	227631	TERMINAL COVER & CLAMP (3 PIN)	
60	227636	STRAIN RELIEF	
61	227637	CABLE CLIP	
62	227635	SWITCH MOUNTING BRACKET (1 SWITCH)	
63	220552	RED ROCKER SWITCH	
64	206573	SWITCH COVER (PLUG HANDLE)	
65	227564	PLUG LOCATION CLAMP	
	206213	HANDLE COVER	
	227627	HANDLE COVER (HARD WIRE + 1 SWITCH)	
66	227623	HANDLE COVER (10 AMP / 3 PIN / 1 SWITCH)	
	220059	MAINS CABLE (3 WIRE/NO PLUG)	
	220956	12.5M X 1.00MM X 3 CORE NUCABLE ((EURO PLUG)	
	220222	MAINS CABLE (3 WIRE / SWISS PLUG)	
	236030	10.0M X 1.00MM X 3 CORE NUCABLE (AUSTRALIAN PLUG)	
67	220950	12.5M X 1.00MM X 3 CORE NUCABLE ((UK PLUG)	
68	220923	STRESS RELIEF	
69	219546	M5 X 20MM LONG POZI PAN SEMS SCREW	