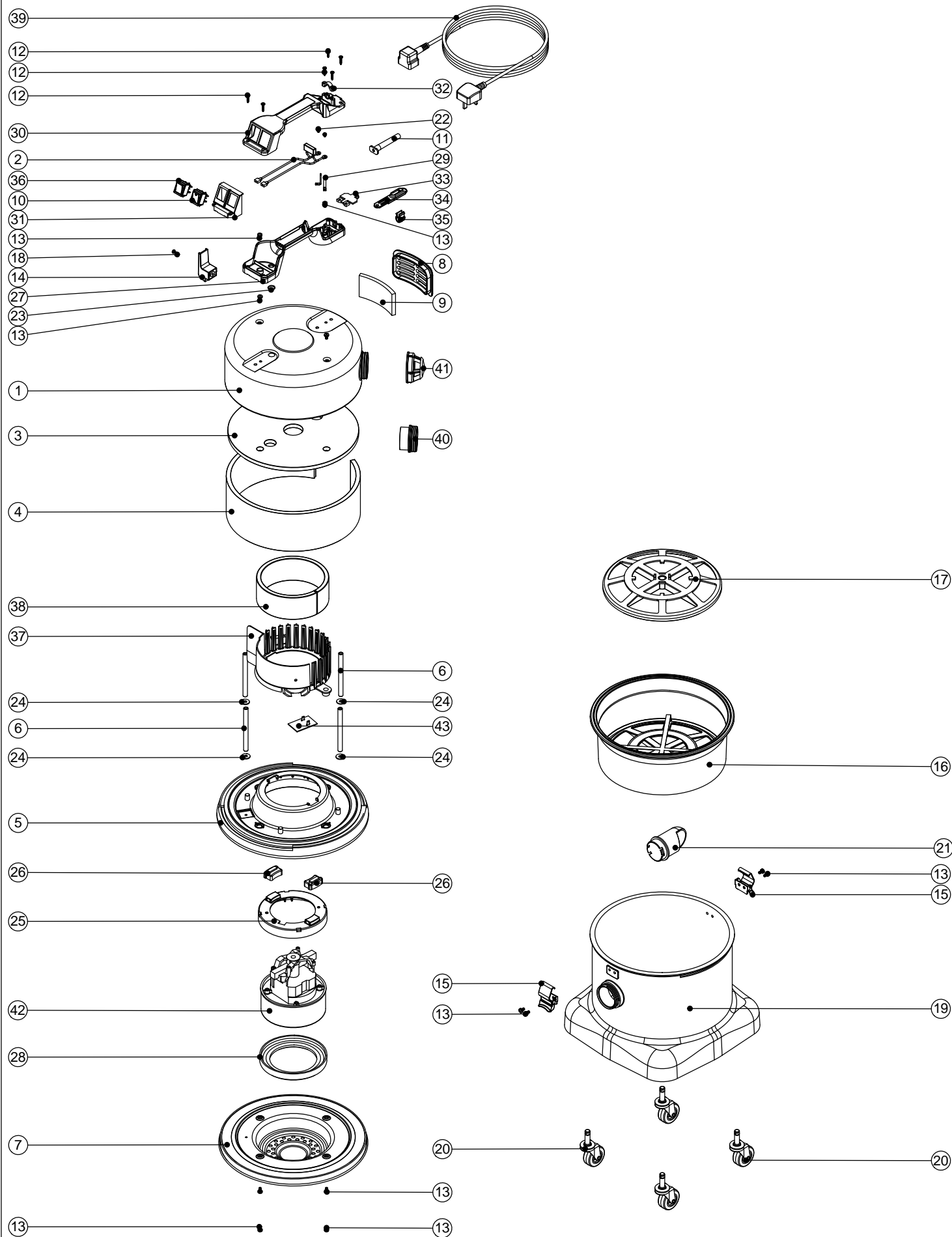


# Numatic International Spare Parts

**Model No:** NVQ-380-22 EXPLODED DRAWING (EXP-0684)

234253  
DRAWING: EXP-0684 ISS:A05  
29/06/2011

NB: FOR WIRING SEE DRAWING: WD-0241



# Numatic International Spare Parts

**Model No:** NVQ-380-22 EXPLODED DRAWING (EXP-0684)

POS:	ITEM NO:	DESCRIPTION:	COMMENTS:
1	401700	BLACK HEAD TOP	NVQ380B-22
	401194	BLACK HEAD TOP	NVQ380-22
2	220142	SUPPRESSOR ASSEMBLY	
3	203005	TOP FELT	
4	203009	SIDE FELT INSULATION	
5	225136	NVQ TOP MOTOR HOUSING (PLASTIC) LAMB MOTOR	
6	208003	115MM LONG ALUMINIUM SPACER	
7	401346	BLACK BOTTOM MOTOR HOUSING	
8	225064	OUTLET GRILL	
9	206260	AIR DIFFUSER PAD	
10	220552	RED ROCKER SWITCH	
11	220923	STRESS RELIEF	
12	219107	No6 X 5/8 INCH LONG POZI PAN PLASTITE SCREW	
13	219047	M5 X 10MM LONG POZI PAN SEMS SCREW	
14	206006	CABLE REELING HOOK	
15	206038	TOGGLE	
16	207109	12 INCH FILTER (DOUBLE BOTTOM) 160GRM SMS	
17	209050	SINGLE FILTER GRID	
18	221151	M4 X 12MM LONG POZI PAN SCREW	
19	300069	PROCESSED RED PLASTIC CONTAINER	
	300070	PROCESSED BLUE PLASTIC CONTAINER	
	300071	PROCESSED GREEN PLASTIC CONTAINER	
	300072	PROCESSED YELLOW PLASTIC CONTAINER	
	300243	PROCESSED GREY PLASTIC CONTAINER	
20	204059	2 INCH CASTOR	
21	227004	BAG CONNECTOR	
22	219090	M4 X 8MM LONG POZI PAN SEMS SCREW	
23	219363	O-RING	
24	219876	1/4 X 3/4 X 16G PLAIN WASHER TABLE 5 ZINC PLATED	
25	227886	MOTOR SPACER	
26	227885	MOUNTING RUBBER	
27	320686	HANDLE BASE MOULDING + INSERTS	
28	227882	BOTTOM MOTOR GASKET	
29	206562	CONTACT PIN	
30	227624	HANDLE COVER 10AMP 2PIN 2 SWITCH	
	227626	HANDLE COVER HARD WIRE 2 SWITCH	HARD WIRE VERSION
31	227629	SWITCH MOUNTING BRACKET	
32	227564	PLUG LOCATION CLAMP	
33	227632	TERMINAL COVER & CLAMP	
34	227636	STRAIN RELIEF	
35	227637	CABLE CLIP	
36	220243	BLACK/GREEN ROCKER SWITCH	
37	227883	NOISE REDUCTION POD	
38	203020	POD SIDE FELT	
39	236009	10.0M X 1.00MM X 2 CORE NUCABLE (UK PLUG)	
	236013	10.0M X 1.00MM X 2 CORE NUCABLE (EURO PLUG)	
	236017	10.0M X 1.00MM X 2 CORE NUCABLE (SWISS PLUG)	
	236021	10.0M X 1.00MM X 2 CORE NUCABLE (SOUTH AFRICA PLUG)	
	236029	10.0M X 1.00MM X 2 CORE NUCABLE (AUSTRALIAN PLUG)	
	236049	10.0M X 1.5MM X 2 CORE CABLE PLUS 16AMP INDUSTRIAL PLUG	HARD WIRE VERSION
	206608	NUMATIC 2 SPEED CONTROL PCB (120V) RED BOARD	
	206607	NUMATIC 2 SPEED CONTROL PCB (220V) BLACK BOARD	
40	206005	AIR OUTLET NECK	NVQ380B-22
41	604151	AIR DIFFUSER FOR BLOWER TYPES	NVQ380B-22
42	205407	230V 2 STAGE THRO FLOW TAPER FAN MOTOR (DL21104)(MARKED 230V)	
	205401	120V 2 STAGE THRO FLOW TAPER FAN MOTOR (DL21101T) TCO	120V
43	208436	1200W 2 SPEED CONTROL PCB 600W @ 230V 50Hz RED BOARD	
	206608	NUMATIC 2 SPEED CONTROL PCB (120V) RED BOARD	120V