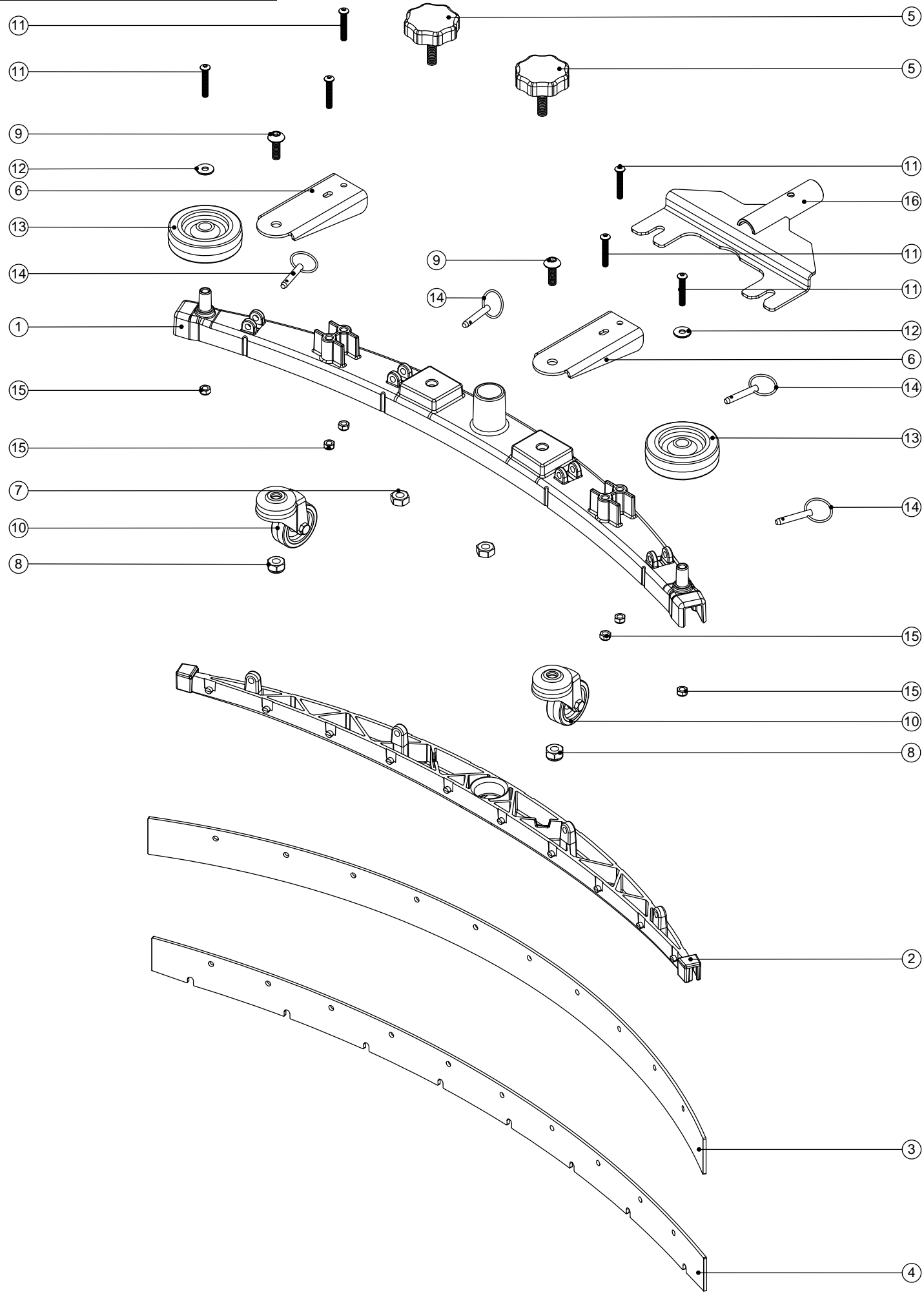


Numatic International Spare Parts

Model No: Twintec Squeegee Assy (650mm Scrub Width/38mm Hose)

234680
DRAWING: DRW-4435 ISS: A02
20/10/2009

NB: FOR WIRING SEE DRAWING: N/A



Numatic International Spare Parts

Model No: Twintec Squeegee Assy (650mm Scrub Width/38mm Hose)

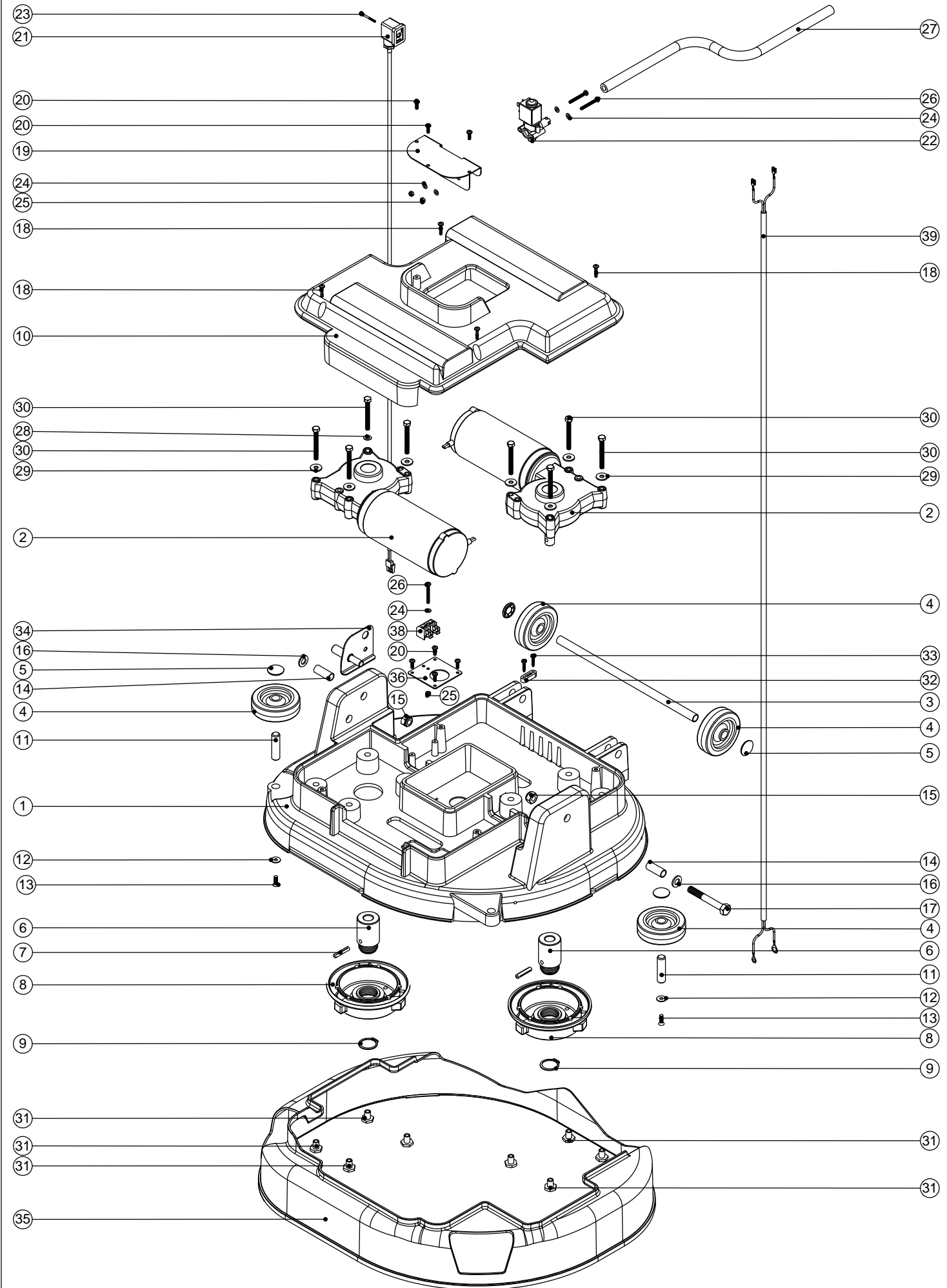
POS:	ITEM NO:	DESCRIPTION:	COMMENTS:
1	208198	(650MM SCRUB WIDTH) ALUMINIUM SQUEEGEE CASTING (38MM HOSE FITTING)	
2	229987	(650MM SCRUB WIDTH) BLADE HOLDER Moulding (SLOping PROFILE) (32MM & 38MM HOSE FITTING)	
3	206978	(650MM SCRUB WIDTH) REPLACEMENT (3.2MM / 43 SHORE A) REAR POLY/BLADE (847MM LONG)	STANDARD BLADE
	208202	(650MM SCRUB WIDTH) REPLACEMENT (4.0MM / 50 SHORE A) REAR POLY/BLADE (847MM LONG)	PREMIUM BLADE OPTION
	208203	(650MM SCRUB WIDTH) REPLACEMENT (4.0MM / 40 SHORE A) REAR RED LINATEX PREMIUM NATURAL RUBBER /BLADE (847MM LONG)	PREMIUM BLADE OPTION
4	206977	(650MM SCRUB WIDTH) REPLACEMENT (3.2MM / 43 SHORE A) FRONT POLY/BLADE (819MM LONG)	STANDARD BLADE
	208199	(650MM SCRUB WIDTH) REPLACEMENT (3.2MM / 50 SHORE A) FRONT POLY/BLADE (819MM LONG)	PREMIUM BLADE OPTION
	208201	(650MM SCRUB WIDTH) REPLACEMENT (3.2MM / 40 SHORE A) FRONT RED LINATEX PREMIUM NATURAL RUBBER /BLADE (819MM LONG)	PREMIUM BLADE OPTION
5	206951	QUICK RELEASE KNOB	
6	329825	CASTOR PLATE	
7	219963	M10 STAINLESS STEEL FULL NUT	
8	219897	M10 STAINLESS STEEL NYLON INSERT NUT	
9	219910	M10 X 25MM LONG SOCKET BUTTON HEAD STAINLESS STEEL SCREW	
10	204018	50MM CASTOR/GREY RUBBER TYRE	
11	219933	M6 X 35MM SOCKET BUTTON HEAD BOLT STAINLESS STEEL	
12	219647	M6 FORM G STAINLESS STEEL WASHER	
13	204068	3 INCH GREY WHEEL	
14	206953	DETENT PINS	
15	219853	M6 NYLOC HALF NUT (STAINLESS STEEL)	
16	303871	FLOOR TOOL LIFTING PLATE WELDED ASSEMBLY	

Numatic International Spare Parts

Model No: TTB4552/100ST Base Assembly

234644
DRAWING: EXP-1072 ISS:A03
25/01/2011

NB: FOR WIRING SEE DRAWING: WD-0354 & WD-0356



Numatic International Spare Parts

Model No: TTB4552/100ST Base Assembly

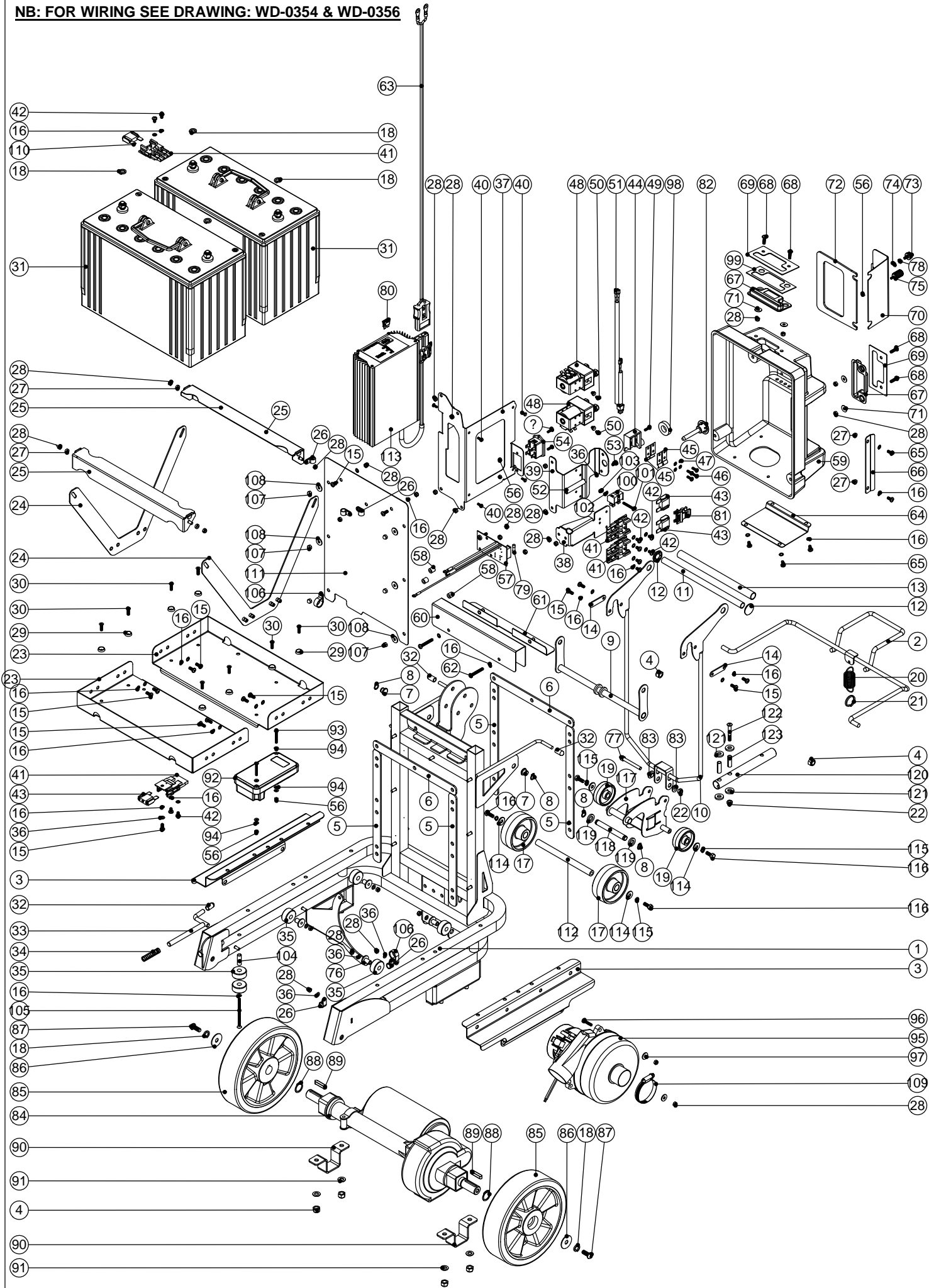
POS:	ITEM NO:	DESCRIPTION:	COMMENTS:
1	329210	GREY BASE MOULDING (PROCESSED)	
2	321137	MODIFIED 24V MOTOR	
3	390860	1/2 INCH DIAMETER X 18G X 300MM LONG STAINLESS STEEL TUBE	
4	204068	3 INCH GREY WHEEL	
5	204021	12.7MM STAINLESS STEEL HUB CAP	
6	229182	DRIVE SHAFT	
7	219523	GROOVED PIN	
8	230207	CHUCK	
9	230048	26MM EXTERNAL CIRCLIP	
10	229369	LID MOULDING	
11	206013	BUFFER WHEEL PIN	
12	219644	M5 FORM G STAINLESS STEEL WASHER	
13	219572	M5 X 16MM LONG POZI PAN COUNTERSUNK STAINLESS STEEL SCREW	
14	390858	32MM LONG SPACER	
15	219649	M10 NYLON INSERT NUT	
16	219449	M10 FORM A WASHER	
17	219698	M10 X 75MM LONG HEX BOLT	
18	219568	No8 X 3/4 INCH LONG POZI PAN STAINLESS STEEL SCREW	
19	303463	SOLENOID MOUNTING PLATE	
20	219569	No8 X 1/2 INCH POZI PAN STAINLESS STEEL SCREW	
21	236096	SOLENOID LEAD ASSEMBLY	
22	220379	24V D.C. SOLENOID VALVE	
23	219251	REPLACEMENT MPM CONNECTOR M3 SCREW	
24	219688	M4 FORM A STAINLESS STEEL WASHER	
25	219687	M4 STAINLESS STEEL NYLON INSERT NUT	
26	219703	M4 X 35MM LONG STAINLESS STEEL POZI PAN SCREW	
27	303248	900MM LONG SILICON TUBE	
28	219007	M6 FORM B WASHER	
29	219008	M6 FORM G WASHER	
30	219224	M6 X 55MM LONG HEX HEAD BOLT	
31	219606	BRACKET SPACER	
32	227008	BLACK CABLE CLAMP	
33	219107	No6 X 5/8 INCH LONG POZI PAN PLASTITE SCREW	
34	303506	LOCKING PIN WELDED ASSEMBLY	
35	229561	SPLASH SKIRT MOULDING	
36	329436	TERMINAL BLOCK MOUNTING PLATE	
37	230097	AXIAL FERRITE BEAD	
38	220316	TERMINAL BLOCK ELKAY	
39	321138	MOTOR LEAD ASSEMBLY	
40	310051	LEMACH MOTOR INTERCHANGEABLE BRUSH SET	2 PER PACK (ITEM NOT SHOWN)

Numatic International Spare Parts

Model No:TTB4500/100ST / TTB4552/100ST Electrical/Chassis Assembly

234528
DRAWING: EXP-0957 ISS:A06
17/02/2011

NB: FOR WIRING SEE DRAWING: WD-0354 & WD-0356



Numatic International Spare Parts

Model No:TTB4500/100ST / TTB4552/100ST Electrical/Chassis Assembly

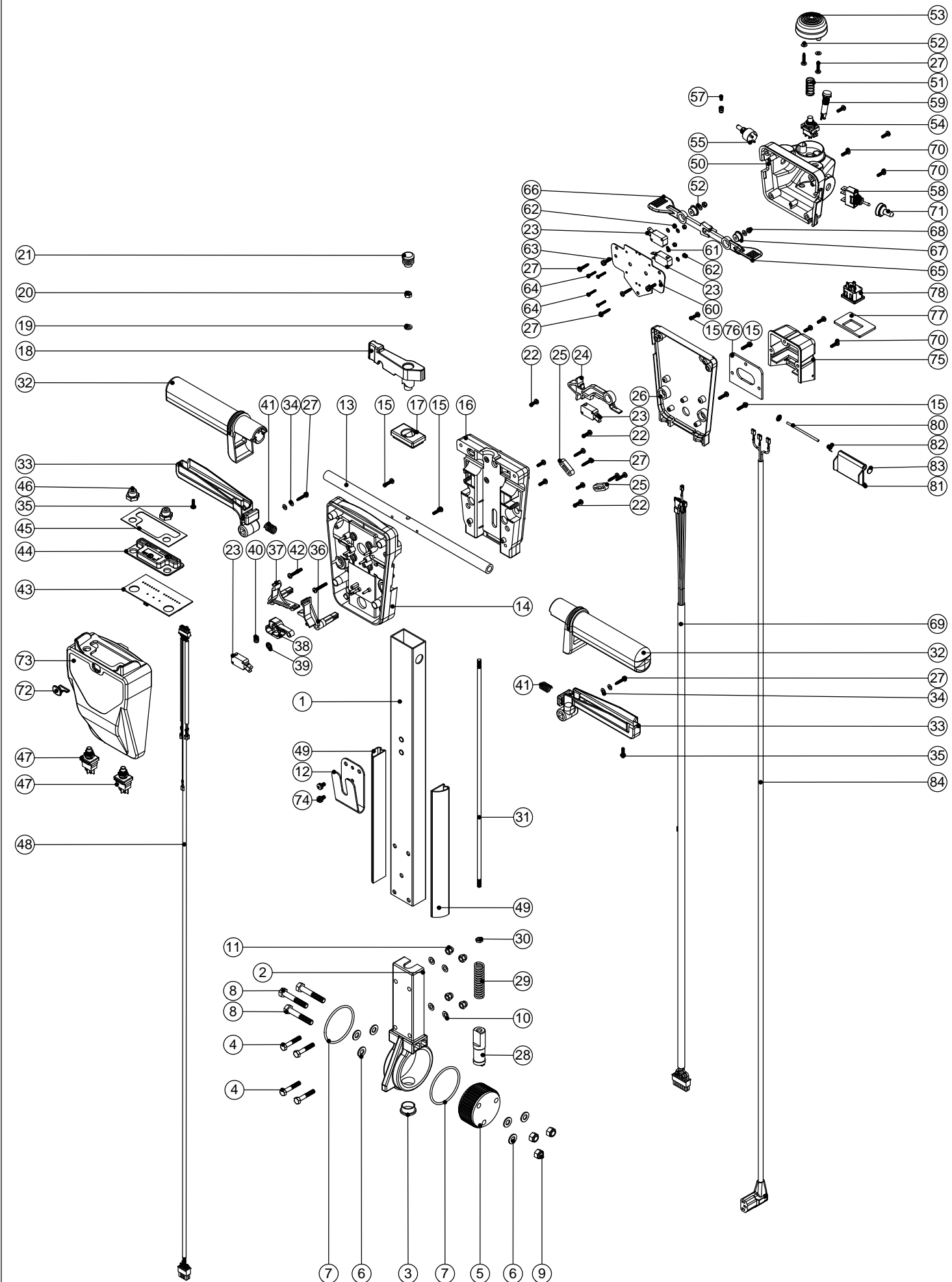
POS:	ITEM NO:	DESCRIPTION:	COMMENTS:
1	329791	NUTSERVED WELDED CHASSIS ASSEMBLY	
2	303620	BATTERY ADJUSTMENT HANDLE W/A	
3	329416	BATTERY SLIDER BRACKET	
4	219639	M8 STAINLESS STEEL NYLON INSERT NUT	
5	202112	CHASSIS GASKET - VERTICAL	
6	202113	CHASSIS GASKET - HORIZONTAL	
7	206647	PIVOT BUSH	
8	219586	10MM EXTERNAL CIRCLIP	
9	303594	FLOOR TOOL PIVOT LINK ASSEMBLY	
10	303595	FLOOR TOOL LIFTING FRAME	
11	391037	235MM LONG X 1/2 INCH DIAMETER X 18G STAINLESS STEEL TUBE	
12	204021	12.7MM STAINLESS STEEL HUB CAP	
13	391038	218MM LONG BLACK NYLON TUBE	
14	329395	FIXING BRACKET	
15	219740	M5 X 12MM LONG STAINLESS STEEL POZI PAN SCREW	
16	219016	M5 SHAKEPROOF WASHER	
17	206713	80MM DIAMETER BLACK WHEEL	
18	219899	M10 SINGLE COIL STAINLESS STEEL WASHER	
19	206712	50MM DIAMETER BLACK WHEEL	
20	226023	EXTENSION SPRING	
21	229293	1 INCH (STAINLESS STEEL) SPLIT RING	
22	219642	M8 STAINLESS STEEL NYLON INSERT NUT	
23	403043	BATTERY TRAY (PAINTED GREY)	
24	303636	NUTSERVED STAINLESS STEEL BATTERY STRAP	
25	303603	BATTERY ANGLE BRACKET WELDED ASSEMBLY	
26	219393	P CLIP	
27	219867	NYLON SPACER	
28	219633	M5 STAINLESS STEEL NYLON INSERT NUT	
29	219573	SCREW INSULATOR	
30	219572	M5 X 16MM LONG POZI PAN COUNTERSUNK STAINLESS STEEL SCREW	
31	230138	98 A/H STUD TERMINAL GEL TYPE BATTERY	
32	229240	END TIP	
33	303483	LOCKING BAR WELDED ASSEMBLY	
34	219873	COMPRESSION SPRING (STAINLESS STEEL)	
35	206648	ROLLER	
36	219355	M5 FORM A STAINLESS STEEL WASHER	
37	329432	CHARGER MOUNTING BRACKET	
38	329430	FUSE HOLDER BRACKET	
39	329451	CONTACTOR BRACKET (3 FUSE TYPE)	
40	219301	M6 X 3/8 INCH LONG POZI PAN SELF TAP SCREW	
41	230102	FUSE HOLDER RATED AT 60 AMPS	
42	219864	M5 X 8MM LONG POZI PAN SCREW	
43	230104	30 AMP MAXI FUSE	
44	321156	ISOLATOR BLOCK & INSERTS ASSEMBLY	
45	219466	ISOLATOR CONTACT	
46	221151	M4 X 12MM LONG POZI PAN SCREW	
47	219015	M4 SHAKEPROOF WASHER	
48	230111	CONTACTOR	
49	219569	No8 X 1/2 INCH POZI PAN STAINLESS STEEL SCREW	
50	219566	M4 X 6MM LONG POZI PAN SCREW	
51	236097	CONTACTOR LEAD ASSEMBLY	
52	208000	92MM LONG ALUMINIUM SPACER	
53	219047	M5 X 10MM LONG POZI PAN SEMS SCREW	
54	221035	HOURS METER	
55	219471	M4 X 12MM LONG POZI PAN SEMS SCREW	
56	219687	M4 STAINLESS STEEL NYLON INSERT NUT	
57	221029	CURRENT SHUNT / CONNECTION PCB	
58	219574	NYLON SPACER	
59	229550	PROCESSED ENCLOSURE BOX	
60	329447	COVER PLATE	
61	303631	NUTSERVED SPLASH GAURD	
62	219661	M5 X 35MM LONG POZI PAN STAINLESS STEEL SCREW	
63	321119	750MM LONG DC CHARGING LEAD ASSEMBLY	
64	329440	EXHAUST COVER PLATE	
65	219668	M5 X 10MM LONG POZI PAN STAINLESS STEEL SCREW	
66	329452	FUSE COVER RETAINING PLATE	
67	206664	LENS MOULDING (NO PRINT)	
68	219547	M5 X 16MM LONG POZI PAN STAINLESS STEEL SCREW	
69	329445	LENS COVER PLATE	
70	329435	FUSE COVER PLATE	
71	219644	M5 FORM G STAINLESS STEEL WASHER	
72	202117	FUSE COVER GASKET	
73	206666	M5 KNULED KNOB	
74	206667	M5 RETAINING WASHER	
75	219738	M4 KNOB	
76	206677	ROLLER SPACER	
77	219748	M6 X 50MM STAINLESS STEEL CAP HEAD BOLT	
78	219721	M5 STAINLESS STEEL FULL NUT	
79	221038	2 AMP 20MM QUICK BLOW FUSE	
80	221037	20 AMP FUSE	
81	230112	MAXI FUSE PULLER	
82	220681	ISOLATOR KNOB	
83	219417	UNIFIED M/C SCREW INSULATOR	
84	206877	TRANSAXLE (C/W SHORTER LEAD & NO BRAKE)	
85	206727	200MM DIAMETER X 50MM WIDE ALLOY WHEEL	
86	219877	M8 X 30 STAINLESS STEEL WASHER	
87	219823	M8 X 20MM LONG STAINLESS STEEL SOCKET BUTTON HEAD BOLT	
88	219889	19MM HEAVY DUTY CIRCLIP	
89	206744	6MM X 6MM X 32MM FEATHER KEY	
90	329780	TRANSAXLE CLAMP	
91	219578	M8 FORM A STAINLESS STEEL WASHER	
92	206881	MOTOR CONTROLLER	
93	219813	M4 X 30MM LONG POZI PAN STAINLESS STEEL SCREW	
94	219688	M4 FORM A STAINLESS STEEL WASHER	
95	321329	TANGENTIAL DISCHARGE 2-STAGE VAC MOTOR & LEAD ASSEMBLY	
96	219820	M5 X 20MM LONG SOCKET CAP SCREW	
97	219005	M5 FORM G WASHER	
98	202116	ISOLATOR WASHER GASKET	
99	220725	SELF ADHESIVE LENS GASKET	
100	220316	TERMINAL BLOCK ELKAY	
101	219321	M4 X 30MM LONG POZI PAN SCREW	
102	219206	M4 FORM A WASHER	
103	219083	M4 NYLON INSERT NUT	
104	219200	6MM X 24MM LONG SPACER	
105	219311	M5 X 70MM LONG POZI PAN COUNTERSUNK SCREW	
106	219514	P-CLIP	
107	219645	M5 STAINLESS STEEL DOME NUT	
108	219497	M5 NYLON WASHER	
109	219819	32MM-50MM STAINLESS STEEL HOSE CLIP	
110	230103	70 MAXI AMP FUSE	
111	303626	BACKPLATE C/W STUDS	
112	208181	TAPPED REAR AXLE	
113	206883	24V 10A NORD CHARGER (220-240V)	
114	206884	24V 10A NORD CHARGER (120V)	
115	219647	M6 FORM G STAINLESS STEEL WASHER	
116	219718	M6 STAINLESS STEEL SPRING WASHER	
117	219719	M6 X 16MM LONG HEXAGONAL STAINLESS STEEL HEAD BOLT	
118	303901	FLOOR TOOL CONNECTOR WELDED ASSEMBLY	
119	208180	CHARIOT PIVOT TUBE	
120	219664	NYLON WASHER (18MM O/D X 10.4MM I/D X 3MM THICK)	
121	303902	FLOOR TOOL PIVOT TUBE	
122	206964	SLIDE NYLON SPACER	
123	219807	M6 X 40MM LONG SOCKET BUTTON HEAD BOLT	
124	206954	SPIRO SPACER	

Numatic International Spare Parts

Model No: TTB4500/100ST / TTB4552/100ST Handle Assembly

234527
DRAWING: EXP-0956 ISS:A04
27/10/2009

NB: FOR WIRING SEE DRAWING: WD-0354 & WD-0356



Numatic International Spare Parts

Model No: TTB4500/100ST / TTB4552/100ST Handle Assembly

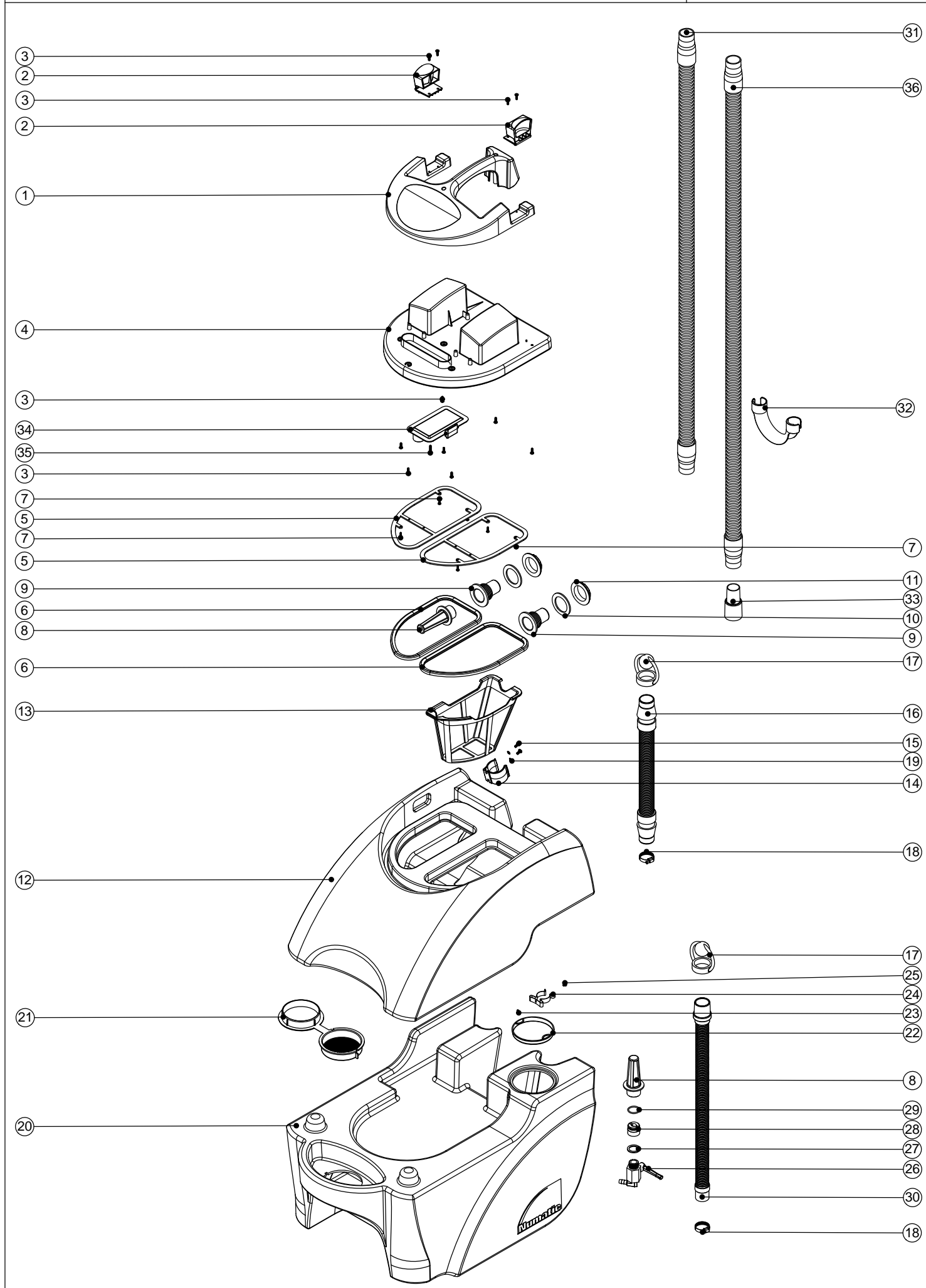
POS:	ITEM NO:	DESCRIPTION:	COMMENTS:
1	429074	430MM PAINTED PROCESSED ALUMINIUM HANDLE	
2	229081	HANDLE CASTING MACHINED	
3	229099	25MM DIA HOLE PLUG	
4	219064	M6 X 35MM LONG HEX BOLT	
5	229074	ADJUSTMENT GEAR	
6	219010	M8 FORM A WASHER	
7	219254	O RING 3MM DIA X 60MM I/D	
8	219091	M8 X 50MM LONG HEX BOLT	
9	219078	M8 NYLON INSERT NUT	
10	219007	M6 FORM B WASHER	
11	219080	M6 DOMENUT	
12	329397	SEPARATOR HANGING BRACKET	
13	338269	CROSS TUBE	
14	227576	FRONT INNER HALF MOULDING	
	229508	FRONT INNER HALF MOULDING	
15	219105	No8 X 5/8 INCH LONG POZI PAN PLASTITE SCREW	CSA 120V FLAME RETARDENT
16	227577	REAR INNER HALF MOULDING	
	229509	REAR INNER HALF MOULDING	
17	227582	HANDLE PLUG MOULDING	CSA 120V FLAME RETARDENT
18	227583	ADJUSTMENT LEVER MOULDING	
19	219493	M6 NYLON WASHER	
20	219642	M6 STAINLESS STEEL NYLON INSERT NUT	
21	20638V	19MM BLACK TUBE END STOP	
22	219101	No8 X 1/2 INCH LONG POZI PAN PLASTITE SCREW	
23	229483	SNAP ACTION SWITCH	
24	227584	INTERLOCK LEVER MOULDING	
25	227008	BLACK CABLE CLAMP	
26	303776	PROCESSED TRACTION DRIVE REAR HANDLE COVER (C/W HOLE)	
	303777	PROCESSED TRACTION DRIVE REAR HANDLE COVER (C/W HOLE)	
27	219107	No6 X 5/8 INCH LONG POZI PAN PLASTITE SCREW	CSA 120V FLAME RETARDENT
28	229073	GEAR LOCKING PIN	
29	229138	SPRING	
30	219099	M6 HALF NUT	
31	229461	440MM HANDLE LOCKING ROD	
32	227580	HAND GRIP MOULDING	
33	229500	TRIGGER MOULDING BLUE	
34	219206	M4 FORM A WASHER	
35	219270	No8 X 1/2 INCH LONG POZI PAN SELF TAP SCREW	
36	227585	LEFT HAND SWITCH OPERATING LEVER MOULDING	
37	227586	RIGHT HAND SWITCH OPERATING LEVER MOULDING	
38	227587	CENTRE SWITCH OPERATING LEVER MOULDING	
39	219805	4MM SPIREFIX	
40	219804	SWITCH COMPRESSION SPRING	
41	219803	TRIGGER COMPRESSION SPRING	
42	219811	No8 X 1 INCH LONG POZI-PAN SELF TAP SCREW	
43	208215	TTB6652/100T & TTB6652/200T LED/SWITCH PANEL C/W USB CONNECTION (WEB SERVICE ENABLED)	
44	206646	LENS MOULDING	
45	220725	SELF ADHESIVE LENS GASKET	
46	220600	SWITCH COVER	
47	220597	PUSH BUTTON SWITCH	
48	236066	HANDLE HARNESS	
49	391074	230MM LONG CUT SELF ADHESIVE CABLE DUCTING	
50	229670	TRACTION CONTROL BOX MOULDING	
51	219816	COMPRESSION SPRING	
52	219688	M4 FORM A STAINLESS STEEL WASHER	
53	227683	EMERGENCY STOP BUTTON	
54	270295	PUSH BUTTON SWITCH	
55	270294	POTENTIOMETER	
56	329363	SPEED ADJUSTMENT KNOB C/W INSERT	
57	219744	M4 X 6MM LONG BLACKODISED GRUB SCREW	
58	206786	SWITCH	
59	270291	GREEN LED INDICATOR 2V C/W 2.2K RESISTOR	
60	329298	DIRECTION TRIGGER MOUNTING PLATE	
61	219501	M3 FORM A STAINLESS STEEL WASHER	
62	219070	M3 NYLON INSERT NUT	
63	219472	M4 X 16MM LONG POZI PAN SEMS SCREW	
64	219500	M3 X 16MM LONG STAINLESS STEEL SLOT SCREW	
65	227684	LEFT HAND DIRECTION TRIGGER	
66	227685	RIGHT HAND DIRECTION TRIGGER	
67	206579	SHOULDERED SPACER	
68	219687	M4 STAINLESS STEEL NYLON INSERT NUT	
69	206878	TRACTION HARNESS	
70	219601	No8 X 3/8 INCH LONG POZI PAN PLASTITE SCREW	
71	206785	SWITCH COVER C/W NUT	
72	229743	USB PLUG MOULDING	
73	229760	TRACTION DRIVE FRONT COVER MOULDING (USB PLUG HOLE)	
	229761	FRONT COVER MOULDING C/W USB PLUG HOLE	
74	219047	M5 X 10MM LONG POZI PAN SEMS SCREW	CSA 120V FLAME RETARDENT
75	329355	PROCESSED SOCKET COVER MOULDING WITH LARGE HOLE	
	303629	PROCESSED SOCKET COVER MOULDING WITH LARGE HOLE	
76	202105	SOCKET COVER SEALING GASKET	CSA 120V FLAME RETARDENT
77	329297	SOCKET MOUNTING PLATE	
78	220391	3 PIN APPLIANCE SOCKET	
79	270193	NEON INDICATOR RED LENS 230V C/W LINK WIRES	
	270195	NEON INDICATOR RED LENS 120V C/W LINK WIRES	
80	390979	72MM LONG X 3MM DIAMETER STAINLESS STEEL BAR	
81	227781	FLAP MOULDING	
82	219819	TORSION SPRING	
83	219832	3MM DIAMETER STARLOCK	
84	321344	AC CHARGING LEAD ASSEMBLY	
	321345	CSA AC CHARGING LEAD ASSEMBLY	

Numatic International Spare Parts

ModelNo:TTB4500/100ST/TT3450S/TT3450C/TTB3450S/TTB3450C/TT4500S/TT4550S/TTB4500S/TTB4552S/TTB3450CRS/TTB4552/100ST Tank / Separator Assembly

234276

DRAWING: EXP-0707 ISS:A19
11/05/2010



Numatic International Spare Parts

ModelNo:TTB4500/100ST/TT3450S/TT3450C/TTB3450S/TTB3450C/TT4500S/TT4550S/TTB4500S/TTB4552S/TTB3450CRS/TTB4552/100ST Tank / Separator Assembly

POS:	ITEM NO:	DESCRIPTION:	COMMENTS:
1	229493	SEPARATOR TOP	
2	229494	CLIP MOULDING	
3	219569	No8 X 1/2 INCH LONG POZI PAN STAINLESS STEEL PLASTITE SCREW	
4	303604	PROCESSED SEPARATOR MOULDING (S TYPE)	
5	329408	GASKET SUPPORT RING	
6	202110	SEALING GASKET	
7	219852	NO6 X 1/2 LONG POZI PAN STAINLESS STEEL SELF TAP SCREW	
8	206265	BARREL FILTER	
9	206228	DRAIN HOSE CONNECTOR	
10	219310	RUBBER WASHER	
11	206116	BLACK NUT	
13	229488	BLUE TOP TANK	TT3450S/TTB3450S/TTB3450C/TT3450C/TTB3450CRS
	229490	BLUE TOP TANK	TT4550S/TTB4500S/TTB4552S/TT4500/TTB4500/100ST/TTB4552/100ST
13	207000	GRIT FILTER BASKET	
14	229762	HOSE CLIP MOULDING	
15	219668	M5 X 10MM LONG POZI PAN STAINLESS STEEL SCREW	
16	206842	420MM LONG BLACK STRETCH HOSE C/W CUFFS	
17	206111	HOSE CLOSURE	
18	219674	30/40MM DIAMETER STAINLESS STEEL JUBILEE CLIP	
19	219016	M5 SHAKEPROOF WASHER	
20	229491	BLUE BOTTOM TANK	TT3450S
	229489	BLUE BOTTOM TANK	TTB4500S/TTB4552S/TTB4500/100ST/TTB4552/100ST
	229536	BLUE BOTTOM TANK	TT4550S/TTB4500S
	229487	BLUE BOTTOM TANK	TTB3450S/TTB3450C/TT3450C/TTB3450CRS
21	229282	FILTER CAP	
22	219452	100MM DIAMETER HOLE PLUG	
23	219688	M4 FORM A STAINLESS STEEL WASHER	
24	219665	TOOL CLIP	
25	219697	M4 X 8MM LONG POZI PAN STAINLESS STEEL SCREW	
26	206597	TANK TAP	
27	219974	BONDED WASHER 5/8 BSP NON S/C	
28	206274	FILTER CONNECTOR	
29	219626	23MM I/D X 2.5MM SECTION O RING	
30	213025	600MM - 630MM LONG DUMP HOSE ASSEMBLY	
31	206697	1300MM LONG SUCTION HOSE	TTB3450S/TTB4500S/TTB4552S (VAC HOSE)
	206698	1500MM LONG SUCTION HOSE	TTB3450C/TT3450C (VAC HOSE)
	206696	1200MM LONG SUCTION HOSE	TT3450S/TT4500S/TT4550S (VAC HOSE)
	329787	1600MM LONG SUCTION HOSE	TTB4500/100ST / TTB4552/100ST (VAC HOSE)
	329786	1.85 METER LONG X 32MM DIAMETER SUCTION HOSE	TTB-3450CRS (VAC HOSE)
32	206512	HOSE HOOK	ALL MACHINES EXCEPT TTB3450C
33	237220	38/32MM ADAPTOR	ALL MACHINES EXCEPT TTB3450C
34	237090	SEPARATOR FLOAT MOULDING (MK 2)	
35	219568	No8 X 3/4 INCH LONG POZI PAN STAINLESS STEEL SCREW	
36	206698	1500MM LONG SUCTION HOSE	ALL MACHINES:EXCEPT TTB3450C (FLOOR TOOL HOSE)
	329786	1.85 METER LONG X 32MM DIAMETER SUCTION HOSE	TTB3450C & TT3450C (FLOOR TOOL HOSE)