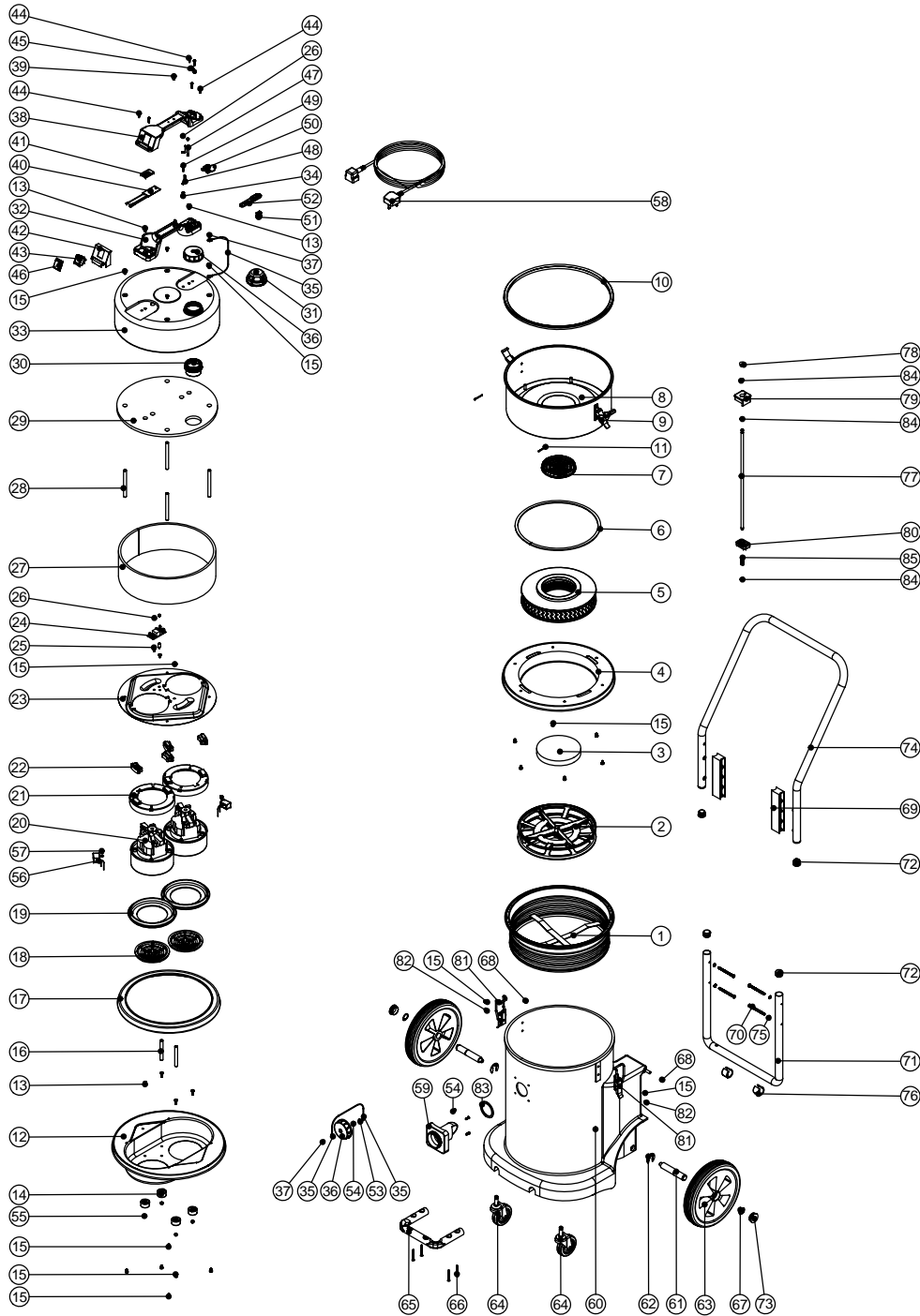


Numatic International Spare Parts

Model No: HZDQ900-2 EXPLODED DRAWING

234376

DRAWING: EXP-0807 ISS:A03
27/06/2008



Numatic International Spare Parts

Model No: HZDQ900-2 EXPLODED DRAWING

POS.	ITEM NO.	DESCRIPTION:	COMMENTS:
1	207030	WHITE FILTER ASSEMBLY	
2	209600	DOUBLE 12 INCH FILTER GRID (GROOVED CIRCULAR RIB)	
3	206099	RUBBER PAD	
4	401019	YELLOW BOTTOM PLATE	
5	604125	NVM-25B FILTER CARTRIDGE	
6	212052	3MM X 9MM INSEAL	
7	206010	FAN GUARD	
8	401018	YELLOW TOP PLATE	
9	206022	SMALL CLAW TOGGLE	
10	202044	TOP PLATE SEAL	
11	219171	3/2 X 28MM SPLIT COTTER PIN	
12	401371	BLACK DUPLEX BOTTOM MOTOR HOUSING	
13	219045	M5 X 16MM LONG POZI PAN SEMS SCREW	
14	206033	PLASTIC FOOT	
15	219047	M5 X 10MM LONG POZI PAN SEMS SCREW	
16	208001	80MM ALUMINIUM SPACER	
17	202002	BUFFER GASKET	
18	227887	FAN GUARD	
19	202005	MOTOR BOTTOM GASKET	
20	2405407	240V 2 STAGE THRO FLOW TAPER FAN MOTOR (DL21104)(MARKED 230V)	240V VERSION
	205406	220V 2 STAGE THRO FLOW TAPER FAN MOTOR (DL21102)(MARKED 230V)	220V VERSION
	205405	115V 2 STAGE THRO FLOW TAPER FAN MOTOR (DL21101)	115V VERSION
21	227886	MOTOR SPACER (LAMB DAF MOTOR)	
22	229549	MOTOR MOUNTING RUBBER	
23	401369	BLACK DUPLEX TOP MOTOR HOUSING	
24	220555	230V DELAY START MODULE	220/240V VERSION
	220556	115V DELAY START MODULE	115V VERSION
25	219414	NYLON PILLAR	
26	219090	M4 X 8MM LONG POZI PAN SEMS SCREW	
27	203003	SIDE FELT	
28	208002	108,5MM LONG ALUMINIUM SPACER	
29	303027	TOP FELT PUNCHED	
30	206005	AIR OUTLET NECK	
31	604151	AIR DIFFUSER FOR BLOWER TYPES	
32	320686	HANDLE BASE MOULDING	
33	401800	BLACK HEAD TOP	
34	220078	BRASS EARTHING SPACER	
35	303037	BLANKING CAP FIXING WIRE	
36	206363	BLANKING CAP	
37	219301	No6 X 3/8 INCH LONG POZI PAN SELF TAP SCREW	
38	320678	HANDLE COVER (DRILLED)	
	320827	HANDLE COVER (DRILLED)	HARDWIRED VERSION
39	220381	AMBER LENS	
40	220677	230V LOW FLOW INDICATOR DEVICE	220/240V VERSION
	220678	115V LOW FLOW INDICATOR DEVICE	115V VERSION
41	202086	LOW FLOW PCB MOUNTING GASKET	
42	227635	SWITCH MOUNTING BRACKET (1 SWITCH)	
43	220582	RED ROCKER SWITCH	
44	219107	No6 X 5/8 INCH LONG POZI PAN PLASTITE SCREW	
45	227564	PLUG LOCATION CLAMP	
46	206573	SWITCH COVER (PLUG HANDLE)	
47	206562	CONTACT PIN	
48	206563	EARTH CONTACT PIN	
49	219274	M4 X 20MM LONG POZI PAN SCREW	
50	227631	TERMINAL COVER & CLAMP (3 PIN)	
51	227637	CABLE CLIP	
52	227636	STRAIN RELIEF	
53	219003	M5 FORM A STEEL WASHER	
54	219101	No8 X 1/2 INCH LONG POZI PAN PLASTITE SCREW	
55	219076	M5 NYLON INSERT NUT	
56	220682	SUPPRESSOR ASSEMBLY	
57	219858	M5 X 8MM HEX WASHER FACED TAPFIX (DIN7500D)	
58	236010	10.0M X 1.00MM X 3 CORE NUCABLE (UK PLUG)	
	220950	12.5MT X 1MM X 3 CORE CABLE (SOCKET + PLUG) UK	
	220911	12.5MT X 2.5MM X 3CORE CABLE PLUS 32AMP INDUSTRIAL PLUG	HARDWIRED VERSION
59	303035	DRILLED DRUM FLANGE	
60	300117	YELLOW CONTAINER	
61	206137	STUB AXLE	
62	219306	E-CLIP	
63	204028	10 INCH WHEEL	
64	204060	3 INCH CASTOR	
65	303127	TOOL MOUNTING BAR	
66	219316	No10 X 43MM LONG POZI PAN COUNTER SUNK PLASTITE SCREW	
67	219308	CIRCLIP	
68	21985V	SPACER	
69	206128	HANDLE BLOCK SPACER	
70	219422	M6 X 70MM LONG POZI PAN COUNTERSUNK SCREW	
71	303128	LOWER HANDLE	
72	20637V	25.4MM TUBE END STOP	
73	206131	BLACK PLASTIC CAP	
74	329169	HANDLE ASSEMBLY	
75	219423	M6 COUNTERSUNK LOCK WASHER	
76	206295	PLASTIC SADDLE FOOT	
77	206133	LOCKING BAR	
78	206132	BLACK PLASTIC CAP	
79	206126	LOCKING BAR KNOB	
80	206127	LOCKING BAR SUPPORT	
81	206135	TOGGLE FASTENER	
82	219330	M5 X 12MM LONG POZI PAN COUNTERSUNK SCREW	
83	202027	HOSE FLANGE GASKET	
84	219307	E CLIP	
85	219312	COMPRESSION SPRING	